

APPENDIX B: eCCR Certification Form (Suggested Format)

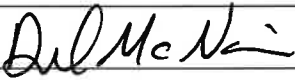
Consumer Confidence Report Certification Form

(To be submitted with a copy of the CCR)

Water System Name:	Scotts Valley Water District
Water System Number:	CA4410013

The water system named above hereby certifies that its Consumer Confidence Report was distributed on June 24, 2022 to customers (and appropriate notices of availability have been given). Further, the system certifies that the information contained in the report is correct and consistent with the compliance monitoring data previously submitted to the State Water Resources Control Board, Division of Drinking Water (DDW).

Certified by:

Name: David McNair	Title: Operations Manager
Signature: 	Date: 10/03/22
Phone number: 831-600-1903	

To summarize report delivery used and good-faith efforts taken, please complete this page by checking all items that apply and fill-in where appropriate:

- ☐ CCR was distributed by mail or other direct delivery methods (attach description of other direct delivery methods used).
- ☒ CCR was distributed using electronic delivery methods described in the Guidance for Electronic Delivery of the Consumer Confidence Report (water systems utilizing electronic delivery methods must complete the second page).
- ☒ "Good faith" efforts were used to reach non-bill paying consumers. Those efforts included the following methods:
 - ☐ Posting the CCR at the following URL:
[www. https://www.svwd.org/media/Reports/CCR2021.pdf](https://www.svwd.org/media/Reports/CCR2021.pdf)
 - ☐ Mailing the CCR to postal patrons within the service area (attach zip codes used)
 - ☐ Advertising the availability of the CCR in news media (attach copy of press release)
 - ☒ Publication of the CCR in a local newspaper of general circulation (attach a copy of the published notice, including name of newspaper and date published)
 - ☐ Posted the CCR in public places (attach a list of locations)

- ☐ Delivery of multiple copies of CCR to single-billed addresses serving several persons, such as apartments, businesses, and schools
- ☐ Delivery to community organizations (attach a list of organizations)
- ☒ Publication of the CCR in the electronic city newsletter or electronic community newsletter or listserv (attach a copy of the article or notice)
- x Electronic announcement of CCR availability via social media outlets (attach list of social media outlets utilized) Facebook & Instagram
- ☐ Other (attach a list of other methods used)
- ☐ *For systems serving at least 100,000 persons:* Posted CCR on a publicly-accessible internet site at the following URL: www.
- ☐ *For privately-owned utilities:* Delivered the CCR to the California Public Utilities Commission

Consumer Confidence Report Electronic Delivery Certification

Water systems utilizing electronic distribution methods for CCR delivery must complete this page by checking all items that apply and fill-in where appropriate.

- ☒ Water system mailed a notification that the CCR is available and provides a direct URL to the CCR on a publicly available website where it can be viewed (attach a copy of the mailed CCR notification). URL: <https://www.svwd.org/media/Reports/CCR2021.pdf>
- ☒ Water system emailed a notification that the CCR is available and provides a direct URL to the CCR on a publicly available site on the Internet where it can be viewed (attach a copy of the emailed CCR notification). URL: <https://www.svwd.org/media/Reports/CCR2021.pdf>
- ☐ Water system emailed the CCR as an electronic file email attachment.
- ☐ Water system emailed the CCR text and tables inserted or embedded into the body of an email, not as an attachment (attach a copy of the emailed CCR).
- ☐ *Requires prior DDW review and approval.* Water system utilized other electronic delivery method that meets the direct delivery requirement.

Provide a brief description of the water system's electronic delivery procedures and include how the water system ensures delivery to customers unable to receive electronic delivery.

Customers with an email address on file were emailed a notice with the CCR link. Those without an email address were sent a post card with the CCR link. The July billing statement had a CCR notice and CCR link.

*****ECRWSSDDM****

POSTAL CUSTOMER

PRSR STG
US POSTAGE PAID
SANTA CRUZ CA
PERMIT NO. 241



PRESS BANNER

PRESSBANNER.COM

JUNE 24, 2022

Serving
SCOTTS VALLEY
and the
SAN LORENZO
VALLEY

SCOTTS VALLEY'S INDEPENDENCE DAY CELEBRATION SET FOR JULY 3

CHRISTINA WISE, Reporter

For locals that have been missing the snap, crackle and pop of 4th of July fireworks, Scotts Valley's new City Manager, Mali LaGoe, has you covered.

LaGoe, who moved to Scotts Valley in January, has never celebrated Independence Day Scotts Valley-style. This year, LaGoe, who was chosen as the new city manager in November of last year, will be overseeing the return of the city's 4th of July event—this year, it's going to be held on Sunday, July 3—and is excited to spread the good news.

LaGoe says that this year's event will be similar to the pre-Covid experience guests previously enjoyed. Scott Valley last had fireworks in 2019 and the city tried to keep the Independence Day momentum going despite the pandemic. In 2020, Scotts Valley featured a virtual parade, with the return of a live

→ Celebration, 11



BACK IN ACTION The Scotts Valley 4th of July parade will return this year and so, too, will the fireworks show. The action all takes place on July 3.

SCOTTS VALLEY EVENT SPACE INCHES CLOSER TO OPENING

DREW PENNER, Reporter

It's been under construction for years, and on June 15, Scotts Valley City Council agreed to approve the opening of a new multi-purpose event facility.

The Scotts Valley Theater Guild has been developing the performance arts space, located at 251-B Kings Village Road, since March 2020 when it signed an initial lease with the city.

The former roller rink is in the middle of a facelift as part of library renovations going on next door. Meanwhile, the interior has been inching ever closer to being able to host concerts, author talks and plays.

The Guild says it's invested \$150,000 in upgrades, but it has been eagerly awaiting the \$95,000 Scotts Valley had promised to chip in.

The city had been holding

→ Event, 10

BOULDER CREEK | SCOTTS VALLEY | DRE #01879796



Open House: Sat/Sun 12-3pm
2563 Mardell Way, Mtn View

Lovely Monte Loma home. Great condition. New roof, plumbing, sewer lateral, low maintenance landscaping, newer hot water heater, fresh paint. Vaulted ceilings & many windows create light/airy feeling. Call Kathy! (831) 588-4995

CENTURY 21

Showcase,
REALTORS®



Open: Sat 12-3pm Sun 1-4pm
6608 TamO'Shanter Drive, San Jose

Sunny courtyard into this single story ranch home. Light & bright w/ lots of windows. Semi open floor plan, many different areas for gathering. Roomy bedrooms w/ views of the courtyard & backyard. Call Peter! (831) 200-6408

BOULDER CREEK | SCOTTS VALLEY | DRE #01879796



Welcome Home!
2455 Elkins Way, San Jose

This home is waiting for you to put some of your character into it! Open floorplan, Living Room with fireplace, Dining Room, spacious kitchen, granite countertops. Call us today for more information. (831) 338-2125



SCOTTS VALLEY WATER QUALITY MAKES THE GRADE

Este reporte contiene las instrucciones mas recientes para obtener informacion importante sobre su agua potable. Traducir, o hablar con alguien que lo entienda.

Scotts Valley Water District's annual report on water quality shows that last year, as in years past, the District's water met all State and Federal primary drinking water standards. Included in the Consumer Confidence Report is information about the source water quality and treated water quality. It also explains how the water is treated and tested to ensure it is always safe and refreshing to drink.

To view and download the 2021 SVWD Water Quality Report, visit www.svwd.org/media/reports/CCR2021.pdf. For questions or to receive a hard copy of the report, call (831) 438-2363.



THANK YOU!

SLV 2022 GRAD NIGHT DONORS

On behalf of the SLV 2022 Grad Night Committee, and the Graduating Class of 2022, we send a heartfelt THANK YOU to our local businesses and community for making Grad Night 2022 a huge success!

MAJOR DONORS

Allard's Septic Service, Art Services by Steve Lanctot, Boardwalk Bowl
Boulder Creek Recreation and Parks District, Ernie's Service Center
Equinox Winery, Ladd's Auto Body, Mountain Mechanics, Scarborough Ace Hardware
Scopazzi's, Tuition Solutions Now, YMCA of the Redwoods, Wild Roots Market

DONORS

The Abbot's Thrift	Felton Feed and Pet Supply	Round Table Felton
Arrow Beauty Bar	Felton Music Hall	Round Table SV
Art of Santa Cruz	Felton Nails	Safeway Felton
Arthur Murray School of Dance	Felton Paint and Hardware	Safeway Scotts Valley
Ashby's Confections	Felton Pit Stop	San Jose Giants
Atlantis Fantasyworld	Felton Veterinary Hospital	Santa Cruz Beach Boardwalk
Bay Federal Credit Union	Gilded Lily Tattoo	Santa Cruz Diner
Bay Photo	Sinia's Gems	Santa Cruz Museum of Art and History
Beauregard Vineyards	Gloss Jar (Penny Ice Creamery/Picnic Basket)	Santa Cruz Museum of Natural History
Betty Burgers/Betty's Eat Inn	Habit Burger	Santa Cruz Warriors
Big Creek Lumber	Humble Sea Brewing	Sara Jensen Massage
Bookshop Santa Cruz	Ideal Hair—Lori Penner	Satellite Telework Center
Boulder Creek Pizza & Pub	Illuminee	Santa Cruz Symphony
Boynnton Fence	In-N-Out Burger	SCM Clothing
Bruno's Bar and Grill	It's Not Trash Designs	Scotts Valley Jewelers
Business with Pleasure	Jean van Ausdall	Shadowbrook
Byington Winery	Jim Flynn (State Farm Insurance)	Shale Canyon Wines
Call Style	Kalani Day Spa	Shopper's Corner
Castelli's Deli	Kendra Scott	Short's Redwood Studio
Chaminade Resort and Spa	Kiani's Pizza and Pasta Bar	Simpatice
Chardonnay II Charters	Lee's Salon	SLV Steve Photography (Steve Kuehl)
Charlie Hong Kong	Liberty Bank	Sockshop & Shoe Company
Cinemas Theater	Little Bridges	Stagnaro's Charters/
Club Ed Surf School	Marini's	Santa Cruz Whale Watching
Coffee Nine	Monterey Bay Eco Tours	The Starving Musician
Comicopolis	Mount Harmon Adventures	Streetlight Records
Cowboy Bar and Grill	Mountain Feed & Farm Supply	Studio Salon and Supply
Crooked Beauty	Mountain Parks Foundation	Sylvan Music
Crossfit SCM	Mountain Spirit	The Spokesman Bicycles
Crew's Nest	Nick the Greek	The Tutoring Club of Scotts Valley
CVS	O'Neill Yacht Charters	Thrive Young Leaders—Deanna Falge
Deven Siggins	Om Gallery	Togo's Scotts Valley
Dharma's Restaurant	Pacific Cookie Co.	Top Golf
Dig Gardens	Pizza My Heart	Toque Blanche
Doctor Auto Import Car Repair	Play It Again Sports	Walnut Avenue Cafe
Dr. John Hedrick	Pono Hawaiian Kitchen & Tap	Well Within Spa
Dream Inn	The Press Banner	Whispering Pines Dry Cleaners
Earthwise Pet	Pure Valley Water	Winchester/Napa Auto Parts
Elks Lodge Local #824	Rodwood Pizzeria	Woodstock Pizza
Empire Grille	Renee's Garden	Zachary's Restaurant
Epic Adventure Games	Ric's Watch Repair	Zelda's on the Beach
Erik's Deli Cafe	Roaring Camp	
Felton Donuts		

In addition, THANK YOU to the parents and community volunteers who donated their time and energy - and to those who supported our various fundraisers.

Edward Jones

> edwardjones.com | Member SIPC



Financial strategies built just for you.



Aaron E. Brandt
Financial Advisor
6630 Highway 9
Suite 102
Felton, CA 95018
831-335-8158



Ivor Thomas
Financial Advisor
3403 Scotts Valley Dr
Suite C
Scotts Valley, CA 95066-3401
831-438-2168



Zach Brown CFP®
Financial Advisor
5619 Scotts Valley Dr
Suite 120
Scotts Valley, CA 95066-3474
831-438-2778



Alan R. Gale
Financial Advisor
5619 Scotts Valley Dr
Suite 100
Scotts Valley, CA 95066
831-438-0719



Cheryl D. Rebottaro, AAMS®, CRPC®
Financial Advisor
221 Mount Herman Rd, Suite F
Scotts Valley, CA
95066-4038
831-461-9311

SCOTTS VALLEY WATER QUALITY MAKES THE GRADE



Este reporte contiene las instrucciones mas recientes para obtener informacion importante sobre su agua potable. Traducir, o hablar con alguien que lo entienda.

Scotts Valley Water District's annual report on water quality shows that last year, as in years past, the District's water met all State and Federal primary drinking water standards.

Included in the Consumer Confidence Report is information about the source water quality and treated water quality. It also explains how the water is treated and tested to ensure it is always safe and refreshing to drink.

[View and download the 2021 SVWD Water Quality Report.](#) For questions or to receive a hard copy of the report, call (831) 438-2363.

[View the 2021 Scotts Valley Water District Water Quality Report](#)

Track your water use — enroll in WaterSmart

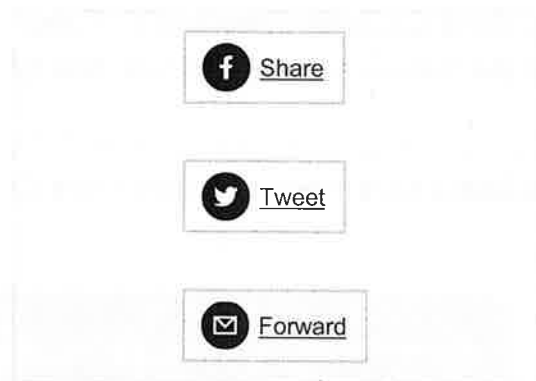
[WaterSmart](#) provides the tools to understand and manage water use. Scotts Valley Water District offers this free service to customers to give people more insight into how and when they are using water, and also to be alerted when leaks occur.

If you haven't signed up yet, [register now](#).

**HOW CAN YOU
MONITOR WATER USE
AT YOUR HOME OR
BUSINESS?**



Use WaterSmart - It's Free!



Copyright © 2022 Scotts Valley Water District, All rights reserved.
You are receiving this email because you opted in at our website to "Stay Connected With Us".

Our mailing address is:
Scotts Valley Water District
2 Civic Center Dr.
Scotts Valley, Ca 95066

Post card copy



SCOTTS VALLEY
WATER DISTRICT



**SCOTTS VALLEY WATER
QUALITY MAKES THE GRADE**

Este reporte contiene las instrucciones mas recientes para obetener informacion importante sobre su agua potable. Traducir, o hablar con alguien que lo entienda.

Scotts Valley Water District's annual report on water quality shows that last year, as in years past, the District's water met all State and Federal primary drinking water standards. Included in the Consumer Confidence Report is information about the source water quality and treated water quality. It also explains how the water is treated and tested to ensure it is always safe and refreshing to drink.

To view and download the 2021 SVWD Water Quality Report, visit **www.svwd.org/media/Reports/CCR2021.pdf** for questions or to receive a hard copy of the report, call (831)438-2363.

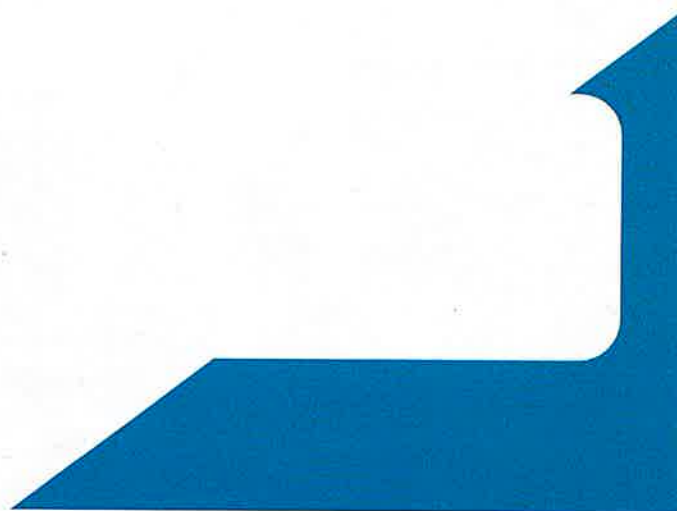


svwd.org



PRSRT STD
U.S. POSTAGE
PAID

Santa Cruz, Ca
PERMIT NO. 210



WATER QUALITY REPORT 2021



**SCOTTS VALLEY
WATER DISTRICT**

svwd.org  svwater



SCOTTS VALLEY WATER QUALITY MAKES THE GRADE

This annual Consumer Confidence Report on water quality shows that last year, as in years past, the District's water met all State and Federal primary drinking water standards. Included in the report is information about the source water quality and treated water quality. It also explains how the water is treated and tested to ensure that it is always safe and refreshing to drink.



Start with a Local Water Supply

Drinking water comes from six wells pumping from the Lompico and Butano aquifers, which are part of the Santa Margarita Groundwater Basin.



Test to Ensure Quality

The District's state-certified water operators monitor the water system 24 hours a day, 7 days a week, to ensure the reliability and safety of our water. Depending on the constituent, the District conducts numerous tests on a daily, weekly, monthly, quarterly and annual basis.



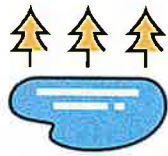
Treat to Provide High-Quality Water

The Lompico and Butano aquifers are naturally high in iron and manganese. The District operates three treatment facilities that utilize oxidation and filtration to reduce these constituents and produce safe, high-quality water.

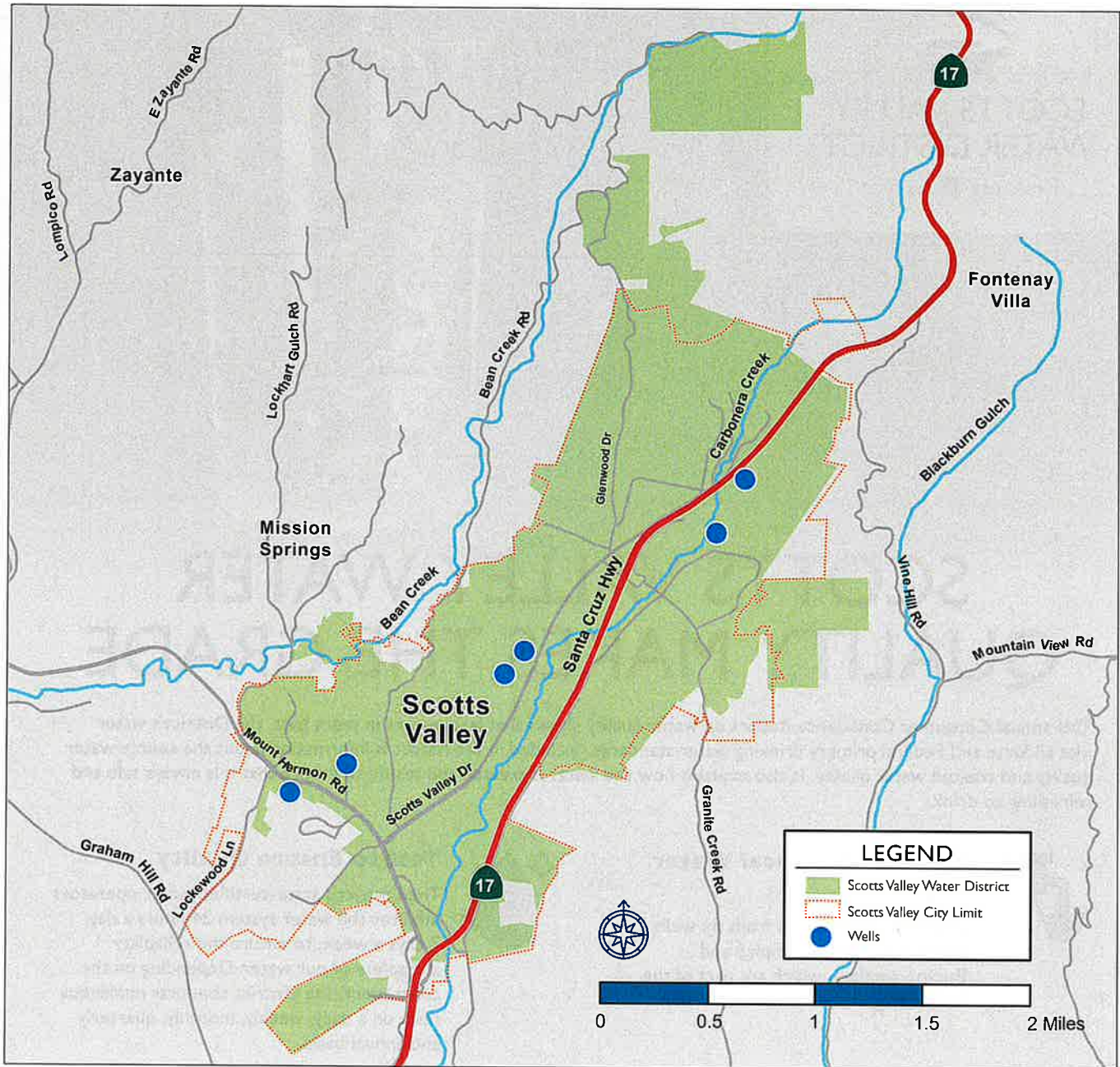


Providing Customers with Safe, Reliable, High-Quality Water is the District's Top Priority

Este informe contiene información muy importante sobre su agua potable. Tradúzcalo o hable con alguien que lo entienda bien.



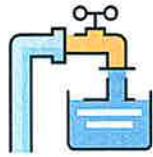
WHERE WATER COMES FROM



**SCOTTS VALLEY
WATER DISTRICT**

Scotts Valley Water District is a public agency providing water service to over 4,000 accounts within six square miles, including most of the City of Scotts Valley and portions of the unincorporated areas north of the city limits.

The District serves as a leader in sustainable water management practices, embraces innovation and is a trusted source of water-related information in the community. The community of Scotts Valley places a high value on livability, innovation and planning for the future, and the District is proud to play a vital role in supporting those efforts by providing a reliable, high-quality water supply.



DRINKING WATER QUALITY

Source Water

Sources of drinking water (both tap and bottled water) include rivers, streams, ponds, reservoirs, springs, and wells. As water travels over the surface of the land or through the ground, it dissolves naturally-occurring minerals and, in some cases, radioactive material, and can pick up substances resulting from the presence of animals or from human activity.

Source water contaminants that may be present include:

- Microbial contaminants, such as viruses and bacteria, that may come from wastewater treatment plants, septic systems, agricultural livestock operations, and wildlife.
- Pesticides and herbicides that may come from a variety of sources such as agriculture, urban storm water runoff, and residential uses.
- Organic chemical contaminants, including synthetic and volatile organic chemicals, that are by-products of industrial processes and petroleum production and can also come from gas stations, urban storm water runoff, agricultural applications, and septic systems.

- Radioactive contaminants that can be naturally occurring or from oil and gas production and mining activities.
- Inorganic contaminants, such as salts and metals, that can be naturally occurring or result from urban storm water runoff, industrial or domestic wastewater discharges, oil and gas production, mining, or farming.



Drinking water, including bottled water, may reasonably be expected to contain at least small amounts of some constituents. The presence of constituents does not necessarily indicate that water poses a health risk. More information about contaminants and potential health effects can be obtained

by visiting epa.gov/safewater or calling the U.S. EPA's Safe Drinking Water Hotline at (800) 426-4791.

Source Water Assessment

In 2018, the District updated its 2001 Source Water Assessment of District wells that provide source water. These wells are considered most vulnerable to the activities associated with contaminants detected in the water supply from dry-cleaning, gasoline storage and distribution, and manufacturing. In addition, these wells are susceptible to negative impacts from

abandoned water and monitoring wells, septic systems, transportation corridors, commercial parking lots, and sewer collection systems.

The complete assessment is available at the District Office – 2 Civic Center Drive, Scotts Valley – or by e-mail at contact@svwd.org.

Water Quality Regulations

In order to ensure that tap water is safe to drink, the U.S. Environmental Protection Agency (USEPA) and the State Water Resources Control Board (State Board) prescribe regulations that limit the amount of certain constituents

in water provided by public water systems. State Board regulations also establish limits for constituents allowed in bottled water to provide protection for public health.

When to Seek Health Care Advice

Some people may be more vulnerable to constituents in drinking water than the general population. Immuno-compromised populations such as persons undergoing chemotherapy, persons who have undergone organ transplants, persons with HIV/AIDS or other immune system disorders, some elderly, and infants can be particularly at risk for infections. These people should

seek advice about drinking water from their health care providers. USEPA/Centers for Disease Control (CDC) guidelines on appropriate means to lessen the risk of infection by *Cryptosporidium* and other microbial contaminants are available from the Safe Drinking Water Hotline at (800) 426-4791.

HOW CONSTITUENTS ARE MEASURED

MILLIGRAMS per liter (mg/L) or parts per MILLION (ppm)



One drop in 14 gallons

OR



One second in 11.5 days

MICROGRAMS per liter (ug/L) or parts per BILLION (ppb)



One drop in 14,000 gallons

OR



One second in nearly 32 years

NANOGRAMS per liter (ng/L) or parts per TRILLION (ppt)

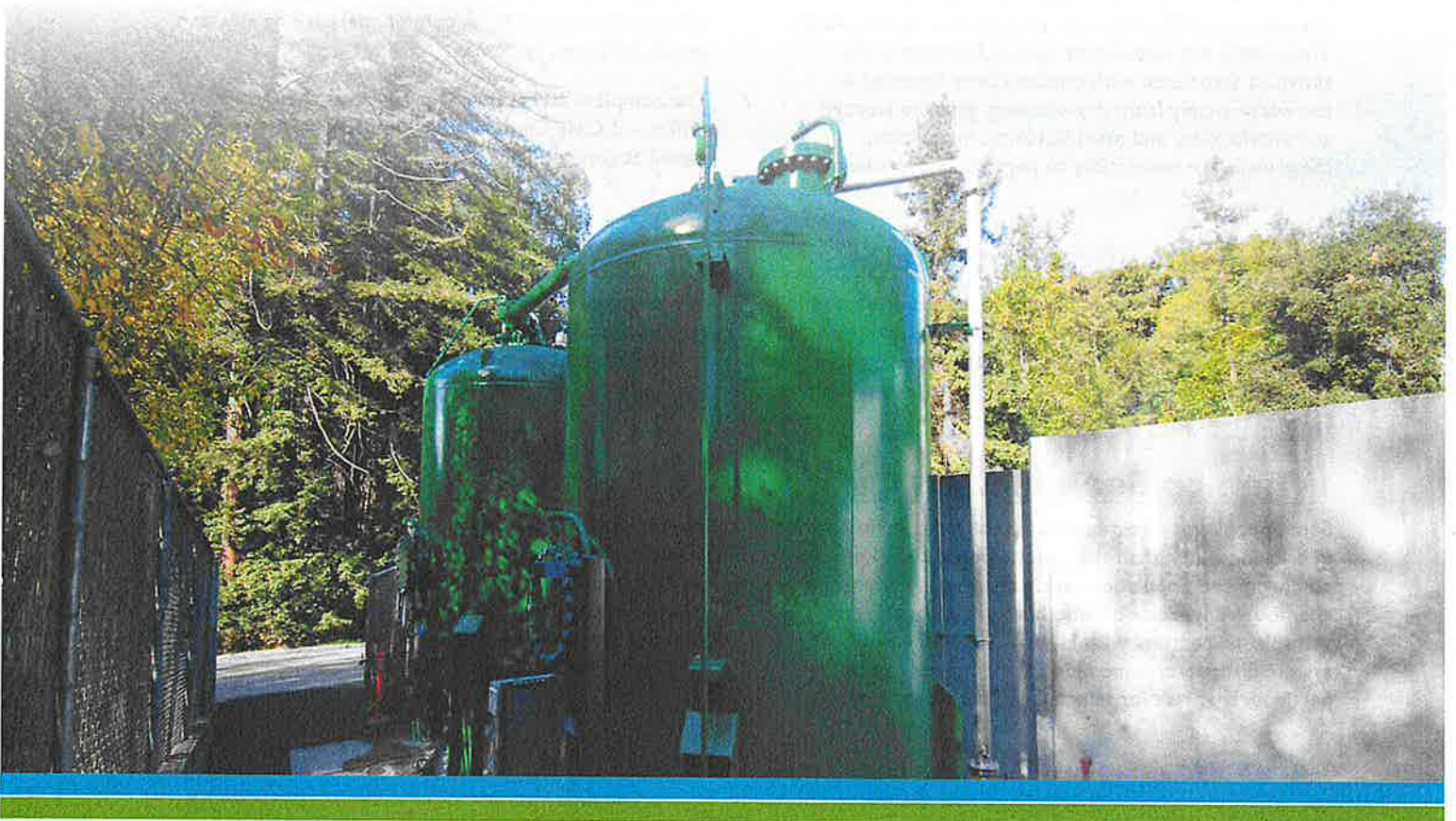


One drop in 14,000,000 gallons

OR



One second in nearly 32,000 years





Primary Health Standards	MCL or MRDL	PHG or MCLG	Range	Average	Violation	Typical Sources of Constituents
Arsenic (ppb)	10	0.004	ND - 5.4	2.2	No	Naturally occurring minerals
Fluoride from natural source (ppm)	2	1	0.14 - 0.40	0.33	No	Naturally occurring minerals
Nitrate as N (ppm)	10	10	ND	ND	No	Naturally occurring minerals
Gross alpha particle activity (pCi/L) ¹	15	None	ND - 4.6	2.3	No	Naturally occurring minerals; last sampled in 2010 and 2011; a new source was added and tested in 2018, 2019, and 2021
Disinfection By-Products & Disinfection Residual	MCL or MRDL	PHG or MCLG	Range	Average	Violation	Typical Sources of Constituents
Total Trihalomethanes (ppb)	80	None	ND - 39	13.9	No	By-product of drinking water chlorination
Haloacetic Acids as HAA5 (ppb)	60	None	ND - 6.1	1.34	No	By-product of drinking water chlorination
Chlorine Residual (ppm)	4	4	0.11 - 1.29	0.68	No	Drinking water disinfectant added for treatment
Residential Tap Monitoring	MCL	PHG or MCLG	Sites Sampled	90th Percentile	Sites Exceeding Action Level	Typical Sources of Constituents
Lead (ppb)	15	0	30	2.3	0	Internal corrosion of household plumbing; erosion of natural deposits
Copper (ppm)	1.3	0.3	30	0.170	0	Internal corrosion of household plumbing; erosion of natural deposits
Lead Sampling of Drinking Water in California Schools (AB746/HSC-116277)		Year Tested	Schools Tested	Typical Sources of Constituents		
Lead		2017	3	Internal corrosion of household plumbing; erosion of natural deposits		
Secondary Aesthetic Standards	Secondary MCL	Range	Average	Typical Sources of Constituents		
Aluminum (ppm)	0.2	ND	ND	Erosion of natural deposits; residual from some surface water treatment processes		
Chloride (ppm)	500	24-56	40	Naturally occurring minerals		
Iron (ppb)	300	ND - 62	9	Naturally occurring minerals		
Manganese (ppb)	50	ND - 7.8	1.1	Naturally occurring minerals		
Odor Threshold @ 60 C (TON)	3	ND	ND	Naturally occurring minerals		
Specific Conductance (MHOS/CM)	1,600	440 - 800	637	Naturally occurring substance that forms ions in water		
Sulfate (ppm)	500	82 - 94	87	Naturally occurring minerals		
Turbidity (NTU)	5	<0.1 - 0.25	0.12	Naturally occurring minerals		
Total Dissolved Solids (ppm)	1,000	290 - 490	407	Naturally occurring minerals		
Other Monitoring Results		Range	Average	NOTES <ul style="list-style-type: none"> Except where noted, water samples for this report were collected from District treatment plants, the water distribution system, and customer homes throughout the 2021 calendar year. The treatment processes effectively remove concentrations of iron, manganese, arsenic, sulfide, and reduce other constituents inherent in the groundwater supply. The State allows us to monitor for some contaminants less than once per year because the concentrations of these contaminants rarely change. Definitions and footnotes on next page.		
pH (UNITS)		7.2 - 8.4	7.7			
Sodium (ppm)		33 - 66	47			
Total Hardness ² as CaCO ₃ (ppm)		230 - 320	282			
Calcium (ppm)		40 - 67	61			
Carbonate as CO ₃ (ppm)		ND - 5.6	3.1			
Magnesium (ppm)		6.2 - 36	23.3			
Potassium (ppm)		1.4 - 2.5	1.9			
Total Alkalinity (ppm)		200 - 340	287			
Orthophosphate as PO ₄ (ppm)		ND - 2.0	1.4			

Definitions

Constituents: Chemical and physical elements contained in water.

Grains per Gallon: A unit of hardness where 17.1 parts per million equals 1 grain per gallon.

Turbidity: A physical characteristic of water that makes the water appear cloudy. The condition is caused by the presence of suspended matter. It's monitored because it is a good indicator of the effectiveness of the filtration system.

MCLG: Maximum Contaminant Level Goal: The level of a contaminant in drinking water below which there is no known or expected risk to health. MCLGs are set by the U.S. Environmental Protection Agency.

MCL: Maximum Contaminant Level: The highest level of a contaminant that is allowed in drinking water. Primary MCLs are set as close to the PHGs or MCLGs as is economically and technologically feasible. Secondary MCLs are set to protect the odor, taste, and appearance of drinking water.

MHOS/CM: Micromhos per Centimeter: An indicator of dissolved minerals in the water.

MRDL: Maximum Residual Disinfectant Level. The highest level of a disinfectant allowed in drinking water. There is convincing evidence that addition of a disinfectant is necessary for control of microbial contaminants.

NA: Not applicable.

ND: Not detected at testing limit.

NTU: Nephelometric turbidity unit, indicating the clarity of the water.

pCi/L: Picocuries per liter is a measure of radio-activity.

PDWS: Primary Drinking Water Standards: MCLs and MRDLs for contaminants that affect health along with their monitoring and reporting requirements, and water treatment requirements.

ppb: Parts per billion or micrograms per liter. 1 ppb equals 0.001 ppm and is equivalent to about one drop in 14,000 gallons of water.

ppm: Parts per million or milligrams per liter. 1 ppm equals 1,000 ppb and is equivalent to about one drop in 14 gallons of water.

PHG: Public Health Goal: The level of a contaminant in drinking water below which there is no known or expected risk to health. PHGs are set by the California Environmental Protection Agency.

Total Dissolved Solids: An indicator of dissolved minerals in the water.

TON: Threshold Odor Number: The unit of odor.

90TH Percentile: The third highest sample result of 20 sample results.

FOOTNOTES

¹ All testing is from 2021, except where noted. Radiological constituents were drawn from treatment plants in September 2010 and 2011, January 2019, and September 2021.

² Average Total Hardness for 2021 was 16.5 grains per gallon.

Got Questions?

Contact Operations Manager David McNair at (831) 600-1903.

How to Get Involved

Customers are invited to attend monthly board meetings on the second Thursday of every month at 7 pm at the District Office, 2 Civic Center Drive, Scotts Valley.

Download this report at:

www.svwd.org/media/reports/CCR2021.pdf



**SCOTTS VALLEY
WATER DISTRICT**

svwd.org  svwater