

2019 CONSUMER CONFIDENCE
REPORT ON WATER QUALITY FOR 2018

ANNUAL WATER QUALITY REPORT

Providing customers with safe, quality drinking water is a top priority for Liberty Utilities, and we are proud to present this Water Quality Report (Consumer Confidence Report) that shares detailed information regarding local water service and our compliance with state and federal quality standards during the 2018 calendar year.

Liberty Utilities makes significant investments each year to ensure the water we deliver to customers meets all safety standards established by the State Water Resources Control Board's Division of Drinking Water (DDW), California Public Utilities Commission (CPUC) and United States Environmental Protection Agency (USEPA). We invest responsibly in order to maintain the local water infrastructure, because a strong infrastructure is a key factor in delivering quality water. Additionally, we have a top-notch water quality program that ensures the water delivered to your home or business is thoroughly tested by independent laboratories and data is provided to the state to verify compliance with all applicable safety regulations.

We know our customers rely on us to make sure the water at their tap is safe to drink, and we take that responsibility seriously.

At Liberty Utilities, the words "Local and Responsive. We Care." are more than a tagline. Our employees live in the local community and take great pride in providing quality water and reliable service to you and your neighbors.

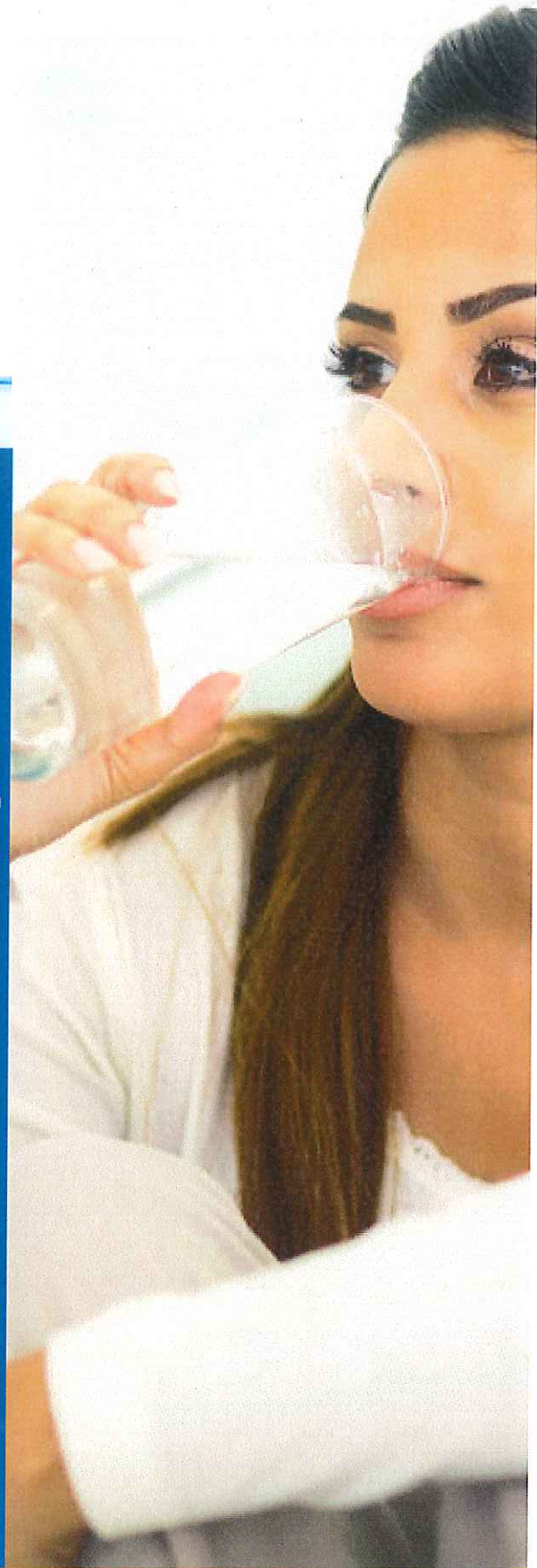
If you have any questions about the information within this report, please don't hesitate to contact us anytime at 760-247-6484. We encourage you to visit our website at www.LibertyUtilities.com to sign up for our email distribution list, so we can keep you informed with timely updates regarding your water service. Also, follow us on Facebook (@LibertyUtilitiesAppleValley) to stay up-to-date.

On behalf of the entire Liberty Utilities family, thank you for being a valued customer and neighbor. We are proud to be your water provider.

Sincerely,

Chris Alario
President, Liberty Utilities-California

*Este informe contiene informacion muy importante sobre su agua potable.
Traduzcalo o hable con alguien que lo entienda bien.*



APPLE VALLEY

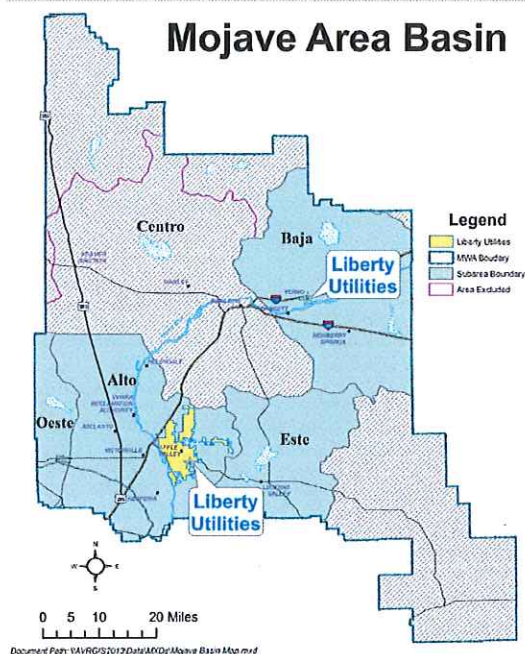


Liberty Utilities®

Where Does My Water Come From?

In 2018 Liberty Utilities – Apple Valley system obtained 100% of its source water from 20 deep wells located throughout the community. These wells draw water from the deep Alto sub-unit of the Mojave ground water basin. This high quality aquifer is recharged from snowmelt from the San Bernardino Mountains to the south, and the Mojave River to the west. Also, the Mojave Water Agency (MWA) imports water from the California State Water Project to spread in the Mojave River to help recharge the ground water. Some of the water we pump has been age-dated close to 10,000 years old by the United States Geologic Survey. That means it has been protected and naturally filtered for a very long time.

Liberty Utilities – Apple Valley has provided dedicated service to its customers for 70 years. In 2018 we produced 9,541 acre-feet of high quality potable drinking water to over 21,000 residential and business customers. This equates to over 3 billion gallons of water served over an area of approximately 50 square miles that encompasses approximately 81% of the Town of Apple Valley and portions of the surrounding area through a network of 474 miles of underground pipe.



From The United States Environmental Protection Agency (USEPA)

The sources of drinking water (both tap water and bottled water) include rivers, lakes, streams, ponds, reservoirs, springs, and wells. As water travels over the surface of the land or through the ground, it dissolves naturally-occurring minerals and, in some cases, radioactive material, and can pick up substances resulting from the presence of animals or from human activity.

Contaminants that may be present in source water include:

- Microbial contaminants, such as viruses and bacteria that may come from sewage treatment plants, septic systems, agricultural livestock operations, and wildlife.

- Inorganic contaminants, such as salts and metals, that can be naturally-occurring or result from urban storm water runoff, industrial or domestic wastewater discharges, oil and gas production, mining, or farming.
- Pesticides and herbicides that may come from a variety of sources such as agriculture, urban storm water runoff, and residential uses.
- Organic chemical contaminants, including synthetic and volatile organic chemicals that are by-products of industrial processes and petroleum production, and can also come from gas stations, urban storm water runoff, agricultural application, and septic systems.
- Radioactive contaminants that can be naturally-occurring or be the result of oil and gas production or mining activities.

In order to ensure that tap water is safe to drink, the USEPA and the State Water Resources Control Board (SWRCB) prescribe regulations that limit the amount of certain contaminants in water provided by public water systems. SWRCB regulations also establish limits for contaminants in bottled water that provide the same protection for public health.

Drinking water, including bottled water, may reasonably be expected to contain at least small amounts of some contaminants. The presence of contaminants does not necessarily indicate that water poses a health risk. More information about contaminants and potential health effects can be obtained by calling the USEPA's Safe Drinking Water Hotline at 1-800-426-4791.

Sensitive Populations May Be More Vulnerable

Some people may be more vulnerable to contaminants in drinking water than the general population. Immuno-compromised persons such as persons with cancer undergoing chemotherapy, persons who have undergone organ transplants, people with HIV/AIDS or other immune disorders, some elderly, and infants can be particularly at risk from infections. These people should seek advice about drinking water from their health care providers. The USEPA and Centers for Disease Control (CDC) guidelines on appropriate means to lessen the risk of infection by *Cryptosporidium* and other microbial contaminants are available from the Safe Drinking Water Hotline at 1-800-426-4791.

What Are The Drinking Water Standards?

Drinking water standards are the regulations set by the USEPA to control the level of contamination in the nation's drinking water. The USEPA and the SWRCB are the agencies responsible for establishing drinking water quality standards in California. These standards are part of the Safe Drinking Water Act's "multiple barrier approach" to drinking water protection. This approach includes assessing and protecting drinking water sources; protecting wells and surface water; making sure water is treated by qualified operators; ensuring the integrity of the distribution system; and making information about water quality available to the public. The water delivered to your home meets the standards required by the USEPA and the SWRCB. If you would like more information about water quality, or to find out about upcoming opportunities to participate in public meetings, please call Jeremy Caudell at 760-240-8334.

This report describes those contaminants that have been detected in the analyses of almost 200 different potential contaminants,

nearly 100 of which are regulated by the USEPA and the SWRCB. Liberty is proud to tell you that there have been no contaminants detected that exceed any federal or state drinking water standards. Hundreds of samples analyzed every month by Liberty's contract certified laboratories assures that all primary (health-related) and secondary (aesthetic) drinking water standards are being met. Sample results are available on the Table that is part of this report. This report is intended to provide information for all water users. If received by an absentee landlord, a business, or a school, please share the information with tenants, employees or students. We are happy to make additional copies of this report available. You may also access this report on the Liberty Utilities web page at www.libertyutilities.com.

Source Water Assessment

The 1996 Safe Drinking Water Act amendments required states to perform an assessment of potentially contaminating activities near drinking water sources of all water utilities. Liberty Utilities completed the Source Water Assessment in 2002, and has been updated since then. Apple Valley wells are considered most vulnerable to the following activities: high density housing; septic systems – low and high density; parks; irrigated crops; golf courses; sewer collection systems; gas stations; roads and streets; railroads; storm water injection wells; storm drain discharge points; storm water detention facilities; agricultural and irrigation water wells; historic grazing; historic waste dumps and landfills; machine shops; and leaking underground storage tanks.

A copy of the complete assessment is available at Liberty Utilities' Apple Valley office, and at the SWRCB office in San Bernardino. You may request a summary of the assessment by contacting Jeremy Caudell Liberty Utilities – Apple Valley at 760-240-8334; or by contacting the SWRCB office in San Bernardino at 909-383-4328.

Important Health Information

Nitrate

Nitrate in drinking water at levels above 10 mg/L is a health risk for infants of less than six months of age. Such nitrate levels in drinking water can interfere with the capacity of the infant's blood to carry oxygen, resulting in a serious illness; symptoms include shortness of breath and blueness of the skin. Nitrate levels above 10 mg/L may also affect the ability of the blood to carry oxygen in other individuals, such as pregnant women and those with certain specific enzyme deficiencies. If you are caring for an infant, or you are pregnant, you should ask advice from your health care provider.

Gross Alpha

Certain minerals are radioactive and may emit a form of radiation known as alpha radiation. Some people who drink water containing alpha emitters in excess of the MCL over many years may have an increased risk of getting cancer.

Arsenic

While your drinking water meets the federal and state standard for arsenic, it does contain low levels of arsenic. The arsenic standard balances the current understanding of arsenic's possible health effects against the costs of removing arsenic from drinking water. The USEPA continues to research the health effects of low levels of arsenic, which is a mineral known to cause cancer in humans at high concentrations and is linked to other health effects such as skin damage and circulatory problems.

Lead

While there have never been any problems with lead in our water system, the USEPA and the SWRCB require the following information be presented in this report. If present, elevated levels of lead can cause serious health problems, especially for pregnant women and young children. Lead in drinking water is primarily from materials and components associated with service lines and home plumbing. Liberty Utilities is responsible for providing high quality drinking water, but cannot control the variety of materials used in plumbing components. When your water has been sitting for several hours, you can minimize the potential for lead exposure by flushing your tap for 30 seconds to 2 minutes before using water for drinking or cooking. If you are concerned about lead in your water, you may wish to have your water tested. Information on lead in drinking water, testing methods, and steps you can take to minimize exposure is available from the Safe Drinking Water Hotline or at <http://www.epa.gov/lead>.

Lead Testing in Schools

Regulation was passed requiring the testing of public schools for lead. During 2018, one school requested and received testing for lead on its campus and to date 11 schools in the Liberty Utilities Apple Valley system have been tested, all in which had no detectable levels of lead.



Apple Valley 2018 Annual Water Quality Report

Primary Standards - Health Based	Primary MCL	PHG (MCLG)	Range of Detection	Average Level	Most Recent Sampling Date (a)	Typical Source of Constituent
Inorganic Constituents						
Arsenic (µg/L)	10	0.004	ND - 5.0	ND	2018	Erosion of natural deposits; runoff from orchards, glass and electronics production wastes
Fluoride (mg/L)	2.0	1	0.22 - 0.73	0.54	2018	Erosion of natural deposits; water additive that promotes strong teeth; discharge from fertilizer and aluminum factories
Nitrate [as N] (mg/L)	10	10	ND - 7.4	1.8	2018	Runoff and leaching from fertilizer use; leaching from septic tanks and sewage; erosion of natural deposits
Radioactive Constituents						
Gross Alpha Activity (pCi/L)	15	(0)	ND - 8	ND	2014	Erosion of natural deposits
Uranium (pCi/L)	20	0.43	ND - 2.7	1.5	2013	Erosion of natural deposits
Secondary Standards - Aesthetic						
Chloride (mg/L)	500	n/a	6.4 - 120	40	2018	Runoff/leaching from natural deposits; seawater influence
Specific Conductance (µS/cm)	1600	n/a	200 - 910	461	2018	Substances that form ions when in water; seawater influence
Total Dissolved Solids (mg/L)	1000	n/a	120 - 550	283	2018	Runoff/leaching from natural deposits
Other Parameters						
Alkalinity (mg/L)	n/a	n/a	72 - 180	109	2018	The sum of polyvalent cations present in the water, generally magnesium and calcium; the cations are usually naturally occurring
Calcium (mg/L)	n/a	n/a	12 - 65	36	2018	
Hardness [as CaCO3] (mg/L)	n/a	n/a	36 - 230	116	2018	
Hardness [as CaCO3] (grains/gal)	n/a	n/a	2.1 - 13.4	6.8	2018	
Magnesium (mg/L)	n/a	n/a	1.3 - 16	6.7	2018	
pH (pH units)	n/a	n/a	7.8 - 8.3	8.1	2018	Refers to the salt present in the water and is generally naturally occurring
Potassium (mg/L)	n/a	n/a	1.0 - 3.7	1.9	2018	
Sodium (mg/L)	n/a	n/a	15 - 96	50	2018	
Unregulated Drinking Water Constituents						
Hexavalent Chromium (µg/L)	10	0.02	ND - 7.2	3.5	2017	Discharge from electroplating factories, leather tanneries, wood preservation, chemical synthesis, refractory production, and textile manufacturing facilities; erosion of natural deposits
UCMR3						
Vanadium (µg/L)	50	n/a	6.6 - 22	11.5	2014	
Molybdenum (µg/L)	n/a	n/a	ND - 14	3.1	2014	
Strontium (µg/L)	n/a	n/a	240 - 2400	639	2014	
Chlorate (µg/L)	800	n/a	ND - 390	86	2014	
UCMR4						
Germanium (µg/L)	n/a	n/a	0.32 - 0.56	0.44	2018	
Manganese (µg/L)	n/a	n/a	0.41 - 19	8.01	2018	
Bromide	n/a	n/a	25 - 320	131	2018	

Apple Valley Water System - Distribution Water Quality

Microbiological Constituents	Primary MCL	PHG (MCLG)	Value	Most Recent Sampling Date	Typical Source of Constituent
Total Coliform Bacteria ≥40 Samples/Month (Present / Absent)	More than 5% of monthly samples are positive	(0)	Highest percent of monthly samples positive was 1 %	2018	Naturally present in the environment
Disinfection Byproducts and Disinfectant Residuals	Primary MCL (MRDL)	PHG (MRDLG)	Range of Detection	Most Recent Sampling Date	Typical Source of Constituent
Chlorine [as Cl ₂] (mg/L)	(4.0)	(4)	0.2 - 1.2	2018	Drinking water disinfectant added for treatment
THMs [Total of Four Trihalomethanes] (µg/L)	80	n/a	7.7 - 15	2018	Byproduct of drinking water disinfection
Lead and Copper Rule	Action Level	PHG (MCLG)	Sample Data	Most Recent Sampling Date	Typical Source of Constituent
Copper (mg/L)	1.3	0.3	0 of the 30 samples collected exceeded the action level.	2016	Internal corrosion of household plumbing systems; erosion of natural deposits; leaching from wood preservatives
Lead (µg/L)	15	0.2	0 of the 30 samples collected exceeded the action level.	2016	Internal corrosion of household plumbing systems; discharges from industrial manufacturers; erosion of natural deposits

KEY TO ABBREVIATIONS AND FOOTNOTES:

mg/L or ppm = milligrams per liter or parts per million
 µg/L or ppb = micrograms per liter or parts per billion
 ng/L or ppt = nanograms per liter or parts per trillion
 pCi/L = picoCuries per liter
 NA or n/a = Not Applicable or Not Required
 ND = Not detected

TT = Treatment Technique

NL = Notification Level

NTU = Nephelometric Turbidity Units. This is a measure of suspended material in water.

(a) = The state allows us to monitor for some parameters less than once per year because the concentrations of these parameters in groundwater sources do not change frequently. Some of the data, though representative, are more than one year old.

DEFINITIONS:

MCL - Maximum Contaminant Level: The highest level of a contaminant allowed in drinking water.

Secondary MCLs are set to protect the odor, taste and appearance of drinking water.

MCLG - Maximum Contaminant Level Goal: The level of a contaminant in drinking water below which there are no known or expected risks to health. MCLGs are set by the US Environmental Protection Agency.

MRDL - Maximum Residual Disinfectant Level: The highest level of a disinfectant allowed in drinking water. There is convincing evidence that addition of a disinfectant is necessary for control of microbial contaminants.

MRDLG - Maximum Residual Disinfectant Level Goal: The level of a drinking water disinfectant below which there is no known or expected risk to health. MRDLGs do not reflect the benefits of the use of disinfectants to control microbial contaminants.

NL - Notification Level: Health-based advisory levels established by the Division of Drinking Water (DDW) for chemicals in drinking water that lack MCLs.

AL - Regulatory Action Level: The concentration of a contaminant which, if exceeded, triggers treatment or other requirements that a water system must follow.

PDWS - Primary Drinking Water Standard: MCLs, MRDLs, and TTs for contaminants that affect health, along with their monitoring and reporting requirements.

PHG-Public Health Goal: The level of a contaminant in drinking water below which there is no known or expected risk to health. PHGs are set by the California Environmental Protection Agency.

TT - Treatment Technique: A required process intended to reduce the level of a contaminant in drinking water.



FOR MORE INFORMATION



LIBERTYUTILITIES.COM



760-247-6484



[@LibertyUtilitiesAppleValley](https://www.facebook.com/LibertyUtilitiesAppleValley)

