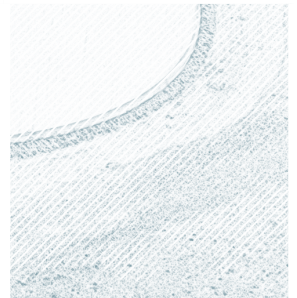
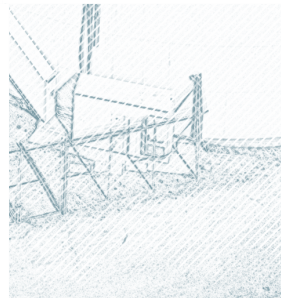
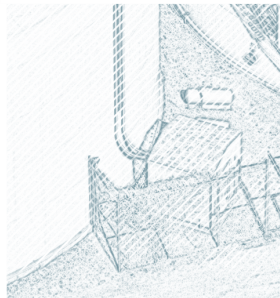
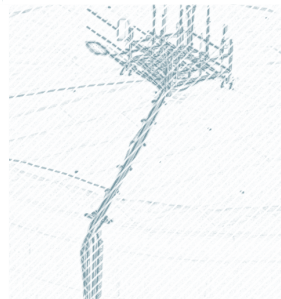
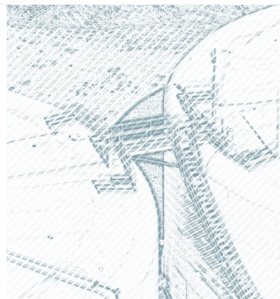
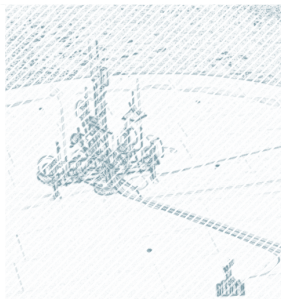
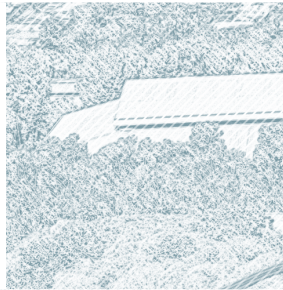


# INDUSTRY INSIGHT

WATER QUALITY EDITION

## 2023 Consumer Confidence Report

Published June 2024





For information or questions regarding this report, please contact Paul Zampielo, (626) 336-1307.

Este informe contiene información muy importante sobre su agua de beber. Tradúzcalo ó hable con alguien que lo entienda bien. Para más información o preguntas con respecto a este informe, póngase en contacto con el Sr. Paul Zampielo, (626) 336-1307.

該報告包含有關您的飲用水的重要信息讓某人為您翻譯或與理解它的人交談

## Industry Public Utilities Waterworks Systems

Industry Public Utilities Waterworks System is owned by the City of Industry and is managed and operated by the La Puente Valley County Water District (LPVCWD) under an Operation and Management Agreement.



This agreement has provided cost savings for both the Industry Public Utilities (IPU) and the La Puente Valley County Water District (District); mostly through operational efficiency. District staff is responsible for providing all customer service functions, water system operations and all water system repair and maintenance activities.

### About the Consumer Confidence Report

Industry Public Utilities is committed to keeping our customers informed about the quality of their water. We provide a safe, reliable drinking water supply to your homes continuously that meets or exceeds all State and Federal drinking water standards.

Our 2023 Consumer Confidence Report (CCR) is an annual drinking water quality report that the Safe Drinking Water Act requires public water systems to provide to its customers and includes important information on where our water comes from and the quality of your water.

### About Your Drinking Water: Sampling Results

Your drinking water is tested thousands of times per year to ensure it meets or exceeds all state and federal drinking water standards. Our water is tested by certified professionals and laboratories to ensure the highest levels of safety.

Commission meetings are held in the Council Chambers located at:  
15651 Mayor Dave Way  
City of Industry, CA 91744

Second Thursday of each month at 8:30am

## Commission

**Cory C. Moss**  
*President*

**Mark Radecki**  
*Commissioner*

**Michael Greubel**  
*Commissioner*

**Steve Marcucci**  
*Commissioner*

**Newell W. Ruggles**  
*Commissioner*



## New Generator Will Provide Backup Power Source

and Will Enhance Emergency Preparedness for an Uninterrupted Water Supply



The design of a new generator was recently completed, which will replace the existing generator at the Lomitas Pumping Station. This new energy source provides backup power to ensure a continuous water supply during power outages or disruption events.

This effort was part of the IPU's Water Master Plan and is fundamental to providing an uninterrupted, safe and reliable water supply.



### **Public Health and Safety**

*Preventing any disruption in the water supply protects public health and the well-being of the community.*



### **Infrastructure Protection**

*Proactive measures require protection of the water infrastructure and mainline system.*



### **Community Commitment**

*Preparedness allows the water system to function for households and essential services during an emergency.*

## Where does your water come from?

During 2023, Industry Public Utilities' water supply relied on local groundwater provided by San Gabriel Valley Water Company (SGVWC), LPVCWD and the City of Industry Well No. 5 (all located within the Main San Gabriel Groundwater Basin). The majority of the water delivered to customers through the water system undergoes a significant treatment process. The treatment systems are designed to treat specific types of contaminants. This process is monitored closely and the water is sampled regularly.



Groundwater Basin



# Information About Drinking Water Contaminants

Drinking water sources (both tap water and bottled water) include rivers, lakes, streams, ponds, reservoirs, springs and wells. As the water travels over the surface of the land or through the ground, the water dissolves naturally occurring minerals – sometimes including radioactive material – and can also pick up substances resulting from the presence of animals and human activity.

Drinking water, including bottled water, may reasonably be expected to contain at least small amounts of some contaminants. The presence of contaminants does not necessarily indicate that water poses a health risk. More information about contaminants and potential health effects can be obtained by calling the **USEPA's Safe Drinking Water Hotline, 1-800-426-4791**.

## Drinking Water Source Assessment

In accordance with the Federal Safe Drinking Water Act, an assessment of the drinking water sources for SGVWC was completed in October 2008. The goal of this assessment was to identify types of activities in the proximity of our drinking water sources that could pose a threat to the water quality. The assessment concluded SGVWC's water sources are most vulnerable to contaminants from the following activities or facilities, including leaking underground storage tanks (known as contaminant plumes); hardware/lumber/parts stores; hospitals; gasoline stations; above ground storage tanks; spreading basins; storm drain discharge points;

and transportation corridors, such as freeways and state highways.

An assessment of the drinking water sources for LPVCWD was updated in March 2008. The assessment concluded LPVCWD's water sources are most vulnerable to contaminants from the following activities or facilities, including leaking underground storage tanks (known as contaminant plumes), high-density housing and transportation corridors, such as freeways and state highways.



**Request a summary of the LPVCWD or SGVWC assessment by contacting Paul Zampielo at (626) 336-1307.**

## Precautions for Immuno Compromised People

Some people may be more vulnerable to contaminants in drinking water than the general population. Immuno-compromised people, such as those with cancer taking chemotherapy, people who have undergone organ transplants, those with HIV/AIDS or other immune system disorders, the elderly and infants, can be particularly at risk from infections. Immuno-compromised people

should seek advice about drinking water from their health care providers. US-EPA/Centers for Disease Control (CDC) guidelines on appropriate means to lessen the risk of infection by *Cryptosporidium* and other microbial contaminants are available from the **Safe Drinking Water Hotline: 1-800-426-4791**.



# Contaminants in Drinking Water

## Lead and Drinking Water

Regulations require local water agencies to test for lead at all K-12 schools constructed before 2010. K-12 schools (total of 2) within the boundaries of the IPU water system were sampled and tested for lead in 2018. If present, elevated levels of lead can cause serious health problems, especially for pregnant women and young children. Lead in drinking water is primarily from materials and components associated with service lines and home plumbing.

IPU is responsible for providing high-quality drinking water, but cannot control the variety of materials used in plumbing components. When your water has been sitting for several hours, you can minimize the potential for lead exposure by flushing your tap for 30 seconds to 2 minutes before using water for drinking or cooking. If you are concerned about lead in your water, you may wish to have your water tested. Information on lead in drinking water, testing methods, and steps you can take to minimize exposure is available from the **USEPA's Safe Drinking Water Hotline, 1-800-426-4791**.

## Nitrate Advisory

At times, nitrate in your tap water may have exceeded half the MCL, but it was never greater than the MCL. The following advisory is issued because in 2023, IPU recorded a nitrate measurement in its treated drinking water above half the nitrate MCL. Nitrate in drinking water at levels above 10 milligrams per liter (mg/L) is a health risk for infants of less than six months of age. Such nitrate levels in drinking water can interfere with the capacity of the infant's blood to carry oxygen, resulting in a serious illness; symptoms include shortness of breath and blueness of the skin. Nitrate levels above 10 mg/L may also affect the ability of the blood to carry oxygen in other individuals, such as pregnant women and those with certain specific enzyme deficiencies. If you are caring for an infant, or you are pregnant, you should ask advice from your health care provider.

# Natural Contaminants Present in Source Water Prior to Treatment May Include:

**Microbial Contaminants:** Such as viruses and bacteria, that may come from sewage treatment plants, septic systems, agricultural livestock operations and wildlife.

**Inorganic Contaminants:** Such as salts and metals, that can be naturally occurring or result from urban stormwater runoff, industrial or domestic wastewater discharges, oil and gas production, mining, or farming.

**Pesticides and Herbicides:** That may come from a variety of sources such as agriculture, urban stormwater runoff and residential uses.

**Organic Chemical Contaminants:** Including synthetic and volatile organic chemicals, which are by-products of industrial processes and petroleum production, and can also come from gasoline stations, urban stormwater runoff, agricultural application, and septic systems.

**Radioactive Contaminants:** Can be naturally occurring or be the result of oil and gas production and mining activities.



Industry Public Utilities — 2023 Water Quality Table

Constituents and (Units)	MCL	PHG or (MCLG)	DLR	Treated Water		Typical Source of Contaminant
				Average (1)	Range (Min-Max)	
Primary Drinking Water Standards — Health-Related Standards						
Inorganic Chemicals						
Arsenic (µg/l)	10	0.004	2	2.34	1.4 - 2.8	Erosion of natural deposits
Barium (mg/l)	1	2	0.1	0.15	0.09 - 0.21	Erosion of natural deposits
Fluoride (mg/l)	2	1	0.1	0.30	0.19 - 0.39	Erosion of natural deposits
Nitrate as N (mg/l)	10	10	0.4	6.6	5.3 - 8.8	Leaching from fertilizer use
RadioActivity						
Gross Alpha (pCi/l)	15	(0)	3	3.0	ND - 4.93	Erosion of natural deposits
Uranium (pCi/l)	20	0.43	1	3.5	1.2 - 6.4	Erosion of natural deposits
Secondary Drinking Water Standards — Aesthetic Standards, Not Health-Related						
Chloride (mg/l)	500	NA	NA	34	19 - 62	Runoff/leaching from natural deposits
Odor (threshold odor number)	3	NA	1	1	ND - 1	Runoff/leaching from natural deposits
Specific Conductance (µmho/cm)	1,600	NA	NA	616	420 - 890	Substances that from ions in water
Sulfate (mg/l)	500	NA	0.5	55	28 - 91	Runoff/leaching from natural deposits
Total Dissolved Solids (mg/l)	1,000	NA	NA	384	230 - 530	Runoff/leaching from natural deposits
Other Constituents of Interest						
Alkalinity (mg/l)	NA	NA	NA	202	150 - 250	Runoff/leaching from natural deposits
Calcium (mg/l)	NA	NA	NA	79	50 - 106	Runoff/leaching from natural deposits
Hardness as CaCO3 (mg/l)	NA	NA	NA	260	169 - 344	Runoff/leaching from natural deposits
Hexavalent Chromium (µg/l)	NA	0.02	NA	4.6	2.8 - 7.2	Runoff/leaching from natural deposits
Magnesium (mg/l)	NA	NA	NA	15.2	9.99 - 19.70	Runoff/leaching from natural deposits
pH (unit)	NA	NA	NA	7.9	7.8 - 8.1	Hydrogen ion concentration
Potassium (mg/l)	NA	NA	NA	3.9	2.7 - 5.4	Runoff/leaching from natural deposits
Sodium (mg/l)	NA	NA	NA	20	12 - 36	Runoff/leaching from natural deposits

AL = Action Level  
DLR = Detection Limit for Purposes of Reporting  
MCL = Maximum Contaminant Level  
MCLG = Maximum Contaminant Level Goal  
mg/l = Parts per million or milligrams per liter  
MRDL = Maximum Residual Disinfectant Level

MRDLG = Maximum Residual Disinfectant Level Goal  
NA = No Applicable Limit  
ND = Not Detected at DLR  
ng/l = Parts per trillion or nanograms per liter  
NL = Notification Level  
NTU = Nephelometric Turbidity Units

pCi/l = PicoCuries per liter  
PHG = Public Health Goal  
µg/l = Parts per billion or micrograms per liter  
µmho/cm = Micromhos per centimeter

[1] The results reported in the table are average concentrations of the constituents detected in your drinking water during year 2023 or from the most recent tests. Treated water data are provided by San Gabriel Valley Water Company and La Puente Valley County Water District. [2] Constituent does not have a DLR. Constituent was detected but the average result is less than the analytical Method Reporting Limit. [3] "<" means constituent was detected but the average result is less than the indicated reporting limit or DLR. [4] Monitoring data provided by San Gabriel Valley Water Company. [5] This water quality is regulated by a secondary standard to maintain aesthetic characteristics (taste, odor, color).

Tables show the average and range of concentrations of the constituents tested during the 2023 calendar year. The state allows us to monitor for some contaminants less than once per year because the concentrations of these contaminants do not change frequently. Unless otherwise noted, the data in this table are from the testing performed from January 1 to December 31, 2023. The table lists all the contaminants detected in your drinking water that have federal and state drinking water standards. Detected unregulated contaminants of interest are also included.

## Unregulated Constituents Requiring Monitoring

<i>Constituents and (Units) [4]</i>	<i>NL</i>	<i>PHG or (MCLG)</i>	<i>Average (1)</i>	<i>Range (Min-Max)</i>	<i>Typical Source of Contaminant</i>
Chlorodifluoromethane (µg/l)	NA	NA	0	ND	Refrigerant
Strontium (ppb)	NA	NA	0	ND	Runoff/leaching from natural deposits

## Distribution System Water Quality

<i>Constituents and (Units)</i>	<i>MCL or (MRDL) or &lt;SMCL&gt;</i>	<i>MCLG or (MRDLG)</i>	<i>Average</i>	<i>Range (Min-Max)</i>	<i>Typical Source of Contaminant</i>
Total Coliforms	no more than 1 positive monthly sample	0	0	0	Naturally present in the environment
Total Trihalomethanes (µg/l)	80	NA	4.6	2.4 - 6.8	By-product of drinking water disinfection
Haloacetic Acids (µg/l)	60	NA	1.3	ND - 2.6	By-product of drinking water disinfection
Chlorine Residual (mg/l)	(4)	(4)	1.15	0.76 - 1.53	Drinking water disinfectant added for treatment
Heterotrophic Plate Count (HPC)	TT	NA	0.91	ND - 74	Naturally present in the environment
Odor (threshold odor number) [5]	3	NA	ND	ND	Naturally occurring organic materials
Turbidity (NTU) [5]	5	NA	0.14	ND - 0.85	Runoff/leaching from natural deposits

## Distribution System — Lead and Copper at Residential Taps

<i>Constituents and (Units)</i>	<i>Action Level</i>	<i>PHG</i>	<i>90th Percentile Value</i>	<i>Sites Exceeding AL/Number of Sits</i>	<i>Typical Source of Contaminant</i>
Lead (µg/l)	15	0.2	0.78	0/23	Corrosion of household plumbing
Copper (mg/l)	1.3	0.3	0.52	0/23	Corrosion of household plumbing

A total of 23 residences were tested for lead and copper in August 2022. Lead and Copper was not detected above the action level in any of the samples. The Industry Public Utilities complies with the Lead and Copper Rule. The next required sampling for lead and copper will be conducted in the summer of 2025.

## Standards, Definitions, Acronyms and Abbreviations

The chart in this report shows the following types of water quality standards:

**Maximum Contaminant Level (MCL):** The highest level of a contaminant that is allowed in drinking water. Primary MCLs are set as close to the PHGs (or MCLGs) as is economically and technologically feasible. Secondary MCLs are set to protect the odor, taste, and appearance of drinking water.

**Maximum Residual Disinfectant Level (MRDL):** The highest level of a disinfectant allowed in drinking water. There is convincing evidence that addition of a disinfectant is necessary for control of microbial contaminants.

**Primary Drinking Water Standard (PDWS):** MCLs, MRDLs and treatment techniques (TTs) for

contaminants that affect health, along with their monitoring and reporting requirements.

**Regulatory Action Level (AL):** The concentration of a contaminant, which, if exceeded, triggers treatment or other requirements that a water system must follow.

**Notification Level (NL):** NLs are health-based advisory levels established by the State Board for chemicals in drinking water that lack MCLs. When chemicals are found at concentrations greater than their NL, certain requirements and recommendations apply.

The chart in this report includes three types of water quality goals:

**Maximum Contaminant Level Goal (MCLG):** The level of a contaminant in drinking water below which there is no known or expected risk to health. MCLGs are set by the USEPA.

**Maximum Residual Disinfectant Level Goal (MRDLG):** The level of a drinking water disinfectant below which there is no known or expected risk to health. MRDLGs do not reflect the benefits of the use of disinfectants to control microbial contaminants.

**Public Health Goal (PHG):** The level of a contaminant in drinking water below which there is no known or expected risk to health. PHGs are set by the California Environmental Protection Agency.

**Treatment Technique (TT):** A required process intended to reduce the level of a contaminant in drinking water.



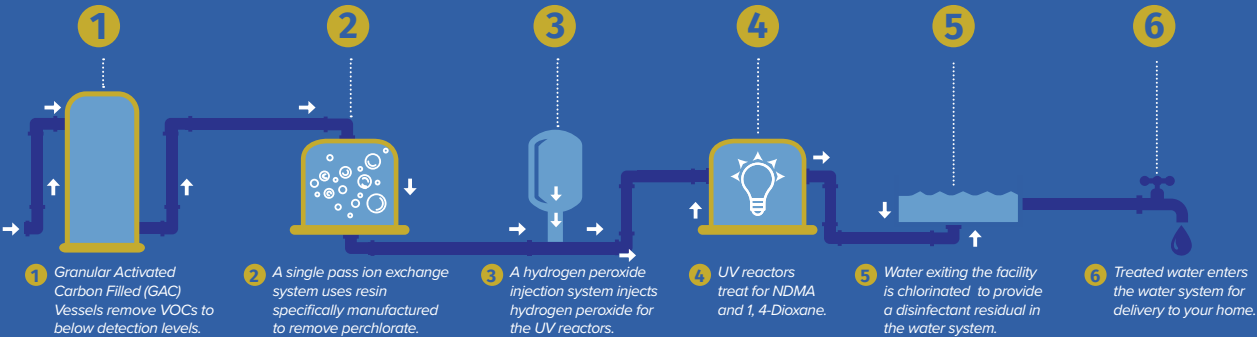
112 N. 1st Street  
La Puente, California 91744

*In Memory of Keith Bowman*



*La Puente Valley County Water District tragically lost one of our team members, Keith Bowman. Keith served the District as a Distribution Supervisor, dedicating his time and expertise to our water system. For more than 24 years Keith was a valued member of our team and his loss is deeply felt by all who knew him professionally and personally. His legacy will live on in the many lives he touched and the positive impact he had on our community.*

How your water is treated.



Office Hours (Horario de Oficina)

Monday — Thursday (lunes a jueves): 7:00 a.m. to 4:30 p.m.      Alternate Friday (viernes): 7:00 a.m. to 3:30 p.m.