



A STATE OF
CALIFORNIA
PUBLIC AGENCY

QUAIL VALLEY WATER DISTRICT

BOARD OF DIRECTORS

Mike Biglay
Enrique Lopez
James Sweany
Catherine Tate
Scott Woehrer

2022 Consumer Confidence Report



Montclair West Well

Water System Information

Water System Name: **QVWD-West & East Combined Water Sysytem**

Report Date: **May 31, 2023**

Type of Water Source(s) in Use: **Groundwater (WELLS)**

Name and General Location of Source(s): **Water supply consists of 2 well located within District boundaries (East Montclair Well and West Montclair Well)**

Drinking Water Source Assessment Information: **The most recent drinking water source assessment for the East Montclair Well and West Montclair Well was completed in October of 2017. No contaminants associated with the identified activities were detected in the water supply. The Montclair wells are considered most vulnerable to these activities:**

- | | |
|-------------------------------------|--------------------------------------|
| 1. Septic systems, | 2. Water supply wells, |
| 3. Drinking water treatment plants, | 4. Transportation corridors (roads), |
| 5. Above ground storage tanks, | 6. Surface water (streams). |

A copy of the 2017 Montclair Wells Source Assessment is available on our website at:
[www.qvwd.org/water quality info/water quality page.html](http://www.qvwd.org/water%20quality%20info/water%20quality%20page.html)

Time and Place of Regularly Scheduled Board Meetings for Public Participation: **Regular meetings of the Board of Directors are held at the District Office (24750 Sand Canyon Road) at 8:30 A.M. on the last Saturday of each month.**

For More Information, Contact: **Randy Hardenbrook, (661) 822-1923**

About This Report

We test the drinking water quality for many constituents as required by state and federal regulations. This report shows the results of our monitoring for the period of January 1 to December 31, 2022 and may include earlier monitoring data.

Importance of This Report Statement in Five Non-English Languages (Spanish, Mandarin, Tagalog, Vietnamese, and Hmong)

Language in Spanish: Este informe contiene información muy importante sobre su agua para beber. Favor de comunicarse **QUAIL VALLEY WATER DISTRICT** a 24750 Sand Canyon Road, Tehachapi, (661) 822-1923 para asistirlo en español.

Language in Mandarin: 这份报告含有关于您的饮用水的重要讯息。请用以下地址和电话联系 **QUAIL VALLEY WATER DISTRICT** 以获得中文的帮助: 24750 Sand Canyon Road, Tehachapi, (661) 822-1923

Language in Tagalog: Ang pag-uulat na ito ay naglalaman ng mahalagang impormasyon tungkol sa inyong inuming tubig. Mangyaring makipag-ugnayan sa **QUAIL VALLEY WATER DISTRICT**, 24750 Sand Canyon Road, Tehachapi o tumawag sa (661) 822-1923 para matulungan sa wikang Tagalog.

Language in Vietnamese: Báo cáo này chứa thông tin quan trọng về nước uống của bạn. Xin vui lòng liên hệ **QUAIL VALLEY WATER DISTRICT** tại 24750 Sand Canyon Road, Tehachapi, (661) 822-1923 để được hỗ trợ giúp bằng tiếng Việt.

Language in Hmong: Tsab ntawv no muaj cov ntsiab lus tseem ceeb txog koj cov dej haus. Thov hu rau **QUAIL VALLEY WATER DISTRICT** ntawm 24750 Sand Canyon Road, Tehachapi, (661) 822-1923 rau kev pab hauv lus Askiv.

Terms Used in This Report

Term	Definition
Level 1 Assessment	A Level 1 assessment is a study of the water system to identify potential problems and determine (if possible) why total coliform bacteria have been found in our water system.
Level 2 Assessment	A Level 2 assessment is a very detailed study of the water system to identify potential problems and determine (if possible) why an <i>E. coli</i> MCL violation has occurred and/or why total coliform bacteria have been found in our water system on multiple occasions.
Maximum Contaminant Level (MCL)	The highest level of a contaminant that is allowed in drinking water. Primary MCLs are set as close to the PHGs (or MCLGs) as is economically and technologically feasible. Secondary MCLs are set to protect the odor, taste, and appearance of drinking water.
Maximum Contaminant Level Goal (MCLG)	The level of a contaminant in drinking water below which there is no known or expected risk to health. MCLGs are set by the U.S. Environmental Protection Agency (U.S. EPA).
Maximum Residual Disinfectant Level (MRDL)	The highest level of a disinfectant allowed in drinking water. There is convincing evidence that addition of a disinfectant is necessary for control of microbial contaminants.
Maximum Residual Disinfectant Level Goal (MRDLG)	The level of a drinking water disinfectant below which there is no known or expected risk to health. MRDLGs do not reflect the benefits of the use of disinfectants to control microbial contaminants.

Term	Definition
Primary Drinking Water Standards (PDWS)	MCLs and MRDLs for contaminants that affect health along with their monitoring and reporting requirements, and water treatment requirements.
Public Health Goal (PHG)	The level of a contaminant in drinking water below which there is no known or expected risk to health. PHGs are set by the California Environmental Protection Agency.
Regulatory Action Level (AL)	The concentration of a contaminant which, if exceeded, triggers treatment or other requirements that a water system must follow.
Secondary Drinking Water Standards (SDWS)	MCLs for contaminants that affect taste, odor, or appearance of the drinking water. Contaminants with SDWSs do not affect the health at the MCL levels.
Treatment Technique (TT)	A required process intended to reduce the level of a contaminant in drinking water.
Variances and Exemptions	Permissions from the State Water Resources Control Board (State Board) to exceed an MCL or not comply with a treatment technique under certain conditions.
ND	Not detectable at testing limit.
ppm	parts per million or milligrams per liter (mg/L)
ppb	parts per billion or micrograms per liter (µg/L)
ppt	parts per trillion or nanograms per liter (ng/L)
ppq	parts per quadrillion or picogram per liter (pg/L)
pCi/L	picocuries per liter (a measure of radiation)

Sources of Drinking Water and Contaminants that May Be Present in Source Water

The sources of drinking water (both tap water and bottled water) include rivers, lakes, streams, ponds, reservoirs, springs, and wells. As water travels over the surface of the land or through the ground, it dissolves naturally-occurring minerals and, in some cases, radioactive material, and can pick up substances resulting from the presence of animals or from human activity.

Contaminants that may be present in source water include:

- Microbial contaminants, such as viruses and bacteria, that may come from sewage treatment plants, septic systems, agricultural livestock operations, and wildlife.
- Inorganic contaminants, such as salts and metals, that can be naturally-occurring or result from urban stormwater runoff, industrial or domestic wastewater discharges, oil and gas production, mining, or farming.
- Pesticides and herbicides, that may come from a variety of sources such as agriculture, urban stormwater runoff, and residential uses.
- Organic chemical contaminants, including synthetic and volatile organic chemicals, that are byproducts of industrial processes and petroleum production, and can also come from gas stations, urban stormwater runoff, agricultural application, and septic systems.
- Radioactive contaminants, that can be naturally-occurring or be the result of oil and gas production and mining activities.

Regulation of Drinking Water and Bottled Water Quality

In order to ensure that tap water is safe to drink, the U.S. EPA and the State Board prescribe regulations that limit the amount of certain contaminants in water provided by public water systems. The U.S. Food and Drug Administration regulations and California law also establish limits for contaminants in bottled water that provide the same protection for public health.

About Your Drinking Water Quality

Drinking Water Contaminants Detected

Tables 1, 2, 3, 4, 5, 6, and 8 list all of the drinking water contaminants that were detected during the most recent sampling for the constituent. The presence of these contaminants in the water does not necessarily indicate that the water poses a health risk. The State Board allows us to monitor for certain contaminants less than once per year because the

concentrations of these contaminants do not change frequently. Some of the data, though representative of the water quality, are more than one year old. Any violation of an AL, MCL, MRDL, or TT is asterisked. Additional information regarding the violation is provided later in this report.

Table 1. Sampling Results Showing the Detection of Coliform Bacteria

Microbiological Contaminants	Highest No. of Detections	No. of Months in Violation	MCL	MCLG	Typical Source of Bacteria
<i>E. coli</i>	0	0	(a)	0	Human and animal fecal waste

(a) Routine and repeat samples are total coliform-positive and either is *E. coli*-positive or system fails to take repeat samples following *E. coli*-positive routine sample or system fails to analyze total coliform-positive repeat sample for *E. coli*.

Table 2. Sampling Results Showing the Detection of Lead and Copper

Lead and Copper	Sample Date	No. of Samples Collected	90 th Percentile Level Detected	No. Sites Exceeding AL	AL	PHG	Typical Source of Contaminant
Lead (ppb)	2021	10	0	0	15	0.2	Internal corrosion of household water plumbing systems; discharges from industrial manufacturers; erosion of natural deposits
Copper (ppm)	2021	10	.090	0	1.3	0.3	Internal corrosion of household plumbing systems; erosion of natural deposits; leaching from wood preservatives

**Table 3. Sampling Results for Sodium and Hardness
Montclair East Well (1503226-002)**

Chemical or Constituent (and reporting units)	Sample Date	Level Detected	Range of Detections	MCL	PHG (MCLG)	Typical Source of Contaminant
Sodium (ppm)	2020	27	-	None	None	Salt present in the water and is generally naturally occurring
Hardness (ppm)	2020	260	-	None	None	Sum of polyvalent cations present in the water, generally magnesium and calcium, and are usually naturally occurring

Montclair West Well (1503226-008)

Chemical or Constituent (and reporting units)	Sample Date	Level Detected	Range of Detections	MCL	PHG (MCLG)	Typical Source of Contaminant
Sodium (ppm)	2022	25	-	None	None	Salt present in the water and is generally naturally occurring
Hardness (ppm)	2022	250	-	None	None	Sum of polyvalent cations present in the water, generally magnesium and calcium, and are usually naturally occurring

Table 4. Detection of Contaminants with a Primary Drinking Water Standard
Montclair East Well (1503226-002)

Chemical or Constituent (and reporting units)	Sample Date	Level Detected	Range of Detections	MCL [MRDL]	PHG (MCLG) [MRDLG]	Typical Source of Contaminant
Turbidity (NTU)	2020	1.9	--	TT	N/A	Soil runoff
Radium 228 (pCi/L)	2016/2017	0.87	ND-2.63	5	0.019	Erosion of natural deposits
Gross Alpha Particle Activity (pCi/L)	2019	2.16	--	15	(0)	Erosion of natural deposits
Flouride (mg/L)	2020	0.16	--	2	1	Erosion of natural deposits; water additive that promotes strong teeth; discharge from fertilizer and aluminum factories

Montclair West Well (1503226-008)

Chemical or Constituent (and reporting units)	Sample Date	Level Detected	Range of Detections	MCL [MRDL]	PHG (MCLG) [MRDLG]	Typical Source of Contaminant
[Enter Contaminant]	[Enter Date]	[Enter No.]	[Enter Range]	[Enter No.]	[Enter No.]	[Enter Source]
Turbidity (NTU)	2022	1.7	--	TT	N/A	Soil runoff
Radium 228 (pCi/L)	2016/2017	0.27	0.081-0.469	5	0.019	Erosion of natural deposits
Gross Alpha Particle Activity (pCi/L)	2022	1.51	--	15	(0)	Erosion of natural deposits

Distribution System

TTHMs (Total Trihalomethanes) (µg/L)	2022	5.6	—	80	N/A	Byproduct of drinking water disinfection
HAA5 (Sum of 5 Haloacetic Acids) (µg/L)	2022	ND	--	60	N/A	Byproduct of drinking water disinfection
Chlorine (mg/L)	2022	1.06	0.60-1.54	[4.0 (as Cl ₂)]	[4.0 (as Cl ₂)]	Drinking water disinfectant added for treatment

Table 5. Detection of Contaminants with a Secondary Drinking Water Standard
Montclair East Well (1503226-002)

Chemical or Constituent (and reporting units)	Sample Date	Level Detected	Range of Detections	SMCL	PHG (MCLG)	Typical Source of Contaminant
Color (Units)	2020	15	--	15		Erosion of natural deposits; residual from surface water treatment processes
Iron (µg/L)	2022	564	370-780	300		Leaching from natural deposits; industrial wastes
Manganese (µg/L)	2022	72	69-76	50		Leaching from natural deposits
Turbidity (NTU)	2020	1.9	--	5		Soil runoff
Total Dissolved Solids (TDS) (mg/L)	2020	370	--	1000		Runoff/leaching from natural deposits
Specific Conductance (µS/cm)	2022	590	--	1600		Substances that form ions when in water; seawater influence
Chloride (mg/L)	2020	18	--	500		Runoff/leaching from natural deposits; seawater influence
Sulfate (mg/L)	2020	41	--	500		Leaching from natural deposits; industrial wastes

Montclair West Well (1503226-008)

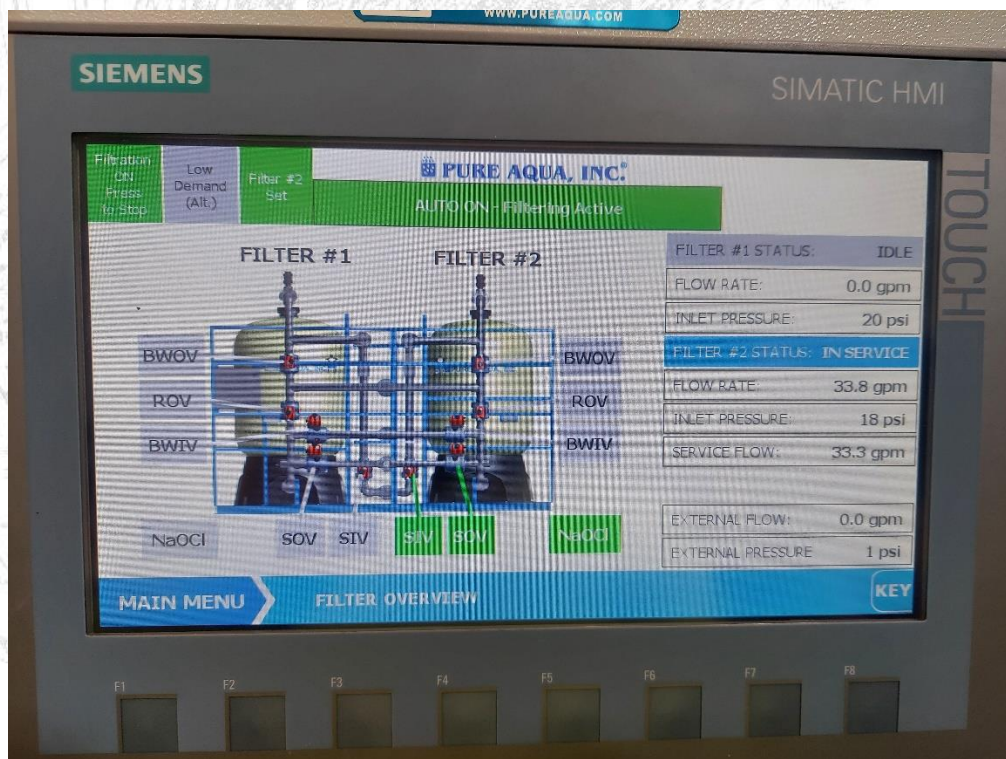
Chemical or Constituent (and reporting units)	Sample Date	Level Detected	Range of Detections	SMCL	PHG (MCLG)	Typical Source of Contaminant
Color (Units)	2022	15	--	15		Erosion of natural deposits; residual from surface water treatment processes
Iron (µg/L)	2022	617	180-1800	300		Leaching from natural deposits; industrial wastes
Manganese (µg/L)	2022	79	63-93	50		Leaching from natural deposits
Turbidity (NTU)	2022	1.7	--	5		Soil runoff
Total Dissolved Solids (TDS) (mg/L)	2022	390	--	1000		Runoff/leaching from natural deposits
Specific Conductance (µS/cm)	2022	570	--	1600		Substances that form ions when in water; seawater influence
Chloride (mg/L)	2022	15	--	500		Runoff/leaching from natural deposits; seawater influence
Sulfate (mg/L)	2022	30	--	500		Leaching from natural deposits; industrial wastes

Distribution System (After Treatment)

Chemical or Constituent (and reporting units)	Sample Date	Level Detected	Range of Detections	SMCL	PHG (MCLG)	Typical Source of Contaminant
Iron (µg/L)	2022	15	ND-18	300		Leaching from natural deposits; industrial wastes
Manganese (µg/L)	2021	ND	ND	50		Leaching from natural deposits



Iron and Manganese Filtration



Additional General Information on Drinking Water

Drinking water, including bottled water, may reasonably be expected to contain at least small amounts of some contaminants. The presence of contaminants does not necessarily indicate that the water poses a health risk. More information about contaminants and potential health effects can be obtained by calling the U.S. EPA's Safe Drinking Water Hotline (1-800-426-4791).

Some people may be more vulnerable to contaminants in drinking water than the general population. Immuno-compromised persons such as persons with cancer undergoing chemotherapy, persons who have undergone organ transplants, people with HIV/AIDS or other immune system disorders, some elderly, and infants can be particularly at risk from infections. These people should seek advice about drinking water from their health care providers. U.S. EPA/Centers for Disease Control (CDC) guidelines on appropriate means to lessen the risk of infection by *Cryptosporidium* and other microbial contaminants are available from the Safe Drinking Water Hotline (1-800-426-4791).

If present, elevated levels of lead can cause serious health problems, especially for pregnant women and young children. Lead in drinking water is primarily from materials and components associated with service lines and home plumbing. Quail Valley Water District is responsible for providing high quality drinking water, but cannot control the variety of materials used in plumbing components. When your water has been sitting for several hours, you can minimize the potential for lead exposure by flushing your tap for 30 seconds to 2 minutes before using water for drinking or cooking. If you do so, you may wish to collect the flushed water and reuse it for another beneficial purpose, such as watering plants. If you are concerned about lead in your water, you may wish to have your water tested. Information on lead in drinking water, testing methods, and steps you can take to minimize exposure is available from the Safe Drinking Water Hotline (1-800-426-4791) or at <http://www.epa.gov/lead>.

In December of 2020, as part of the Proposition 84 funded arsenic remediation project, the newly installed filtration system was placed into operation. The filtration system consists of two Greensand filters designed to remove iron and manganese from the water produced by District wells to levels below State and Federal standards. The filters have exceeded expectations and all samples for iron and manganese from the finished water indicate that iron and manganese levels are below allowable standards. Influent water samples from East Montclair Well indicate Iron levels of 370-780 µg/L and Manganese levels of 64-77 µg/L. Influent water samples from West Montclair Well indicate Iron levels of 180-1800 µg/L and Manganese levels of 63-93 µg/L.