

**Willow Creek C.S.D.**

135 Willow Rd.  
Willow Creek, Ca 95573-0008  
Phone: 530-629-2136  
Fax: 530-629-2137  
willowcreekcsd@gmail.com



**June 2023**

**Bulk Rate  
U.S. Postage Paid  
Willow Creek Chamber  
Permit No. 31**

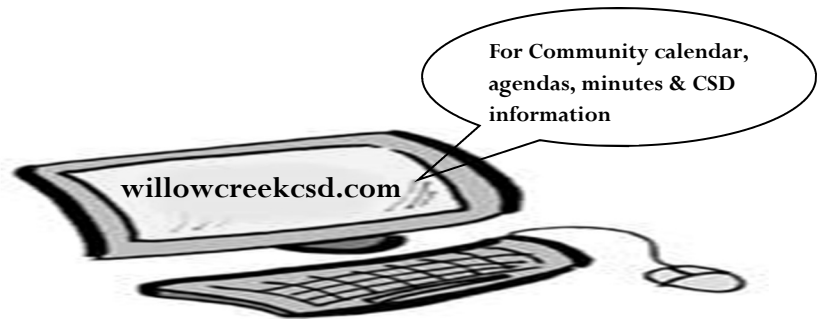
Return service requested

**District Staff**

Susan O’Gorman, General Manager  
Lynn White, Office Manager  
Kevin Latham Jr., Water Operator  
Wyatt Opie McBroom, Water Operator  
Ken Gallamore, Recreation Technician  
Steve Braun, Recreation Technician

**WCCSD Board of Directors**

Board Chair: Riley Morrison  
Vice Chair: Shannon Hughes  
Director: C. Caroline Snow  
Director: Judy Gower  
Director: Ed Duggan



**WCCSD Calendar**

**WCCSD Regular Board Meetings, 6 p.m.**

at the District Office, 135 Willow Rd. (& by Zoom)  
(4th Thursday each month, except Nov. and Dec.  
when it is the 3rd Thursday)

July 27, Aug. 24, Sept. 28, Oct. 26, Nov. 16, Dec. 21  
2024: Jan. 25, Feb. 22, Mar. 28, April 25, May 23,  
and June 27

**Holidays (Office will be closed)**

July 4th & Labor Day - Sep. 4th

Veteran’s Day - Nov. 10th

Thanksgiving Day & day after

December 25th & January 1st

Martin Luther King Jr. - Jan. 15th, 2024

Lincoln’s Birthday - Feb. 12th, 2024

Washington's Birthday - Feb. 20th, 2024

Memorial Day - May 27th, 2024



~ Waterline leak repair, New Years Day 2023~

District meetings also on ZOOM  
Use ZOOM Meeting ID: 414 162 5718  
<https://zoom.us/j/4141625718>  
or DIAL IN: 1-669-900-6833  
press \*9 to raise your hand to speak  
and \*6 to mute/unmute



**Willow Creek Community Services District**  
**2022 Water Quality Consumer Confidence Report**  
**Public Water System Number 12-10015**  
**June 2023**

For additional information concerning your drinking water, contact Susan O’Gorman, General Manager and Chief Operator, at 530-629-2136 or email [willowcreekcsd@gmail.com](mailto:willowcreekcsd@gmail.com). If you would like to tour of our facility, please contact Susan O’Gorman at 530-629-2136. Our operators would be more than happy to guide you through our treatment process.

The Willow Creek Community Services District (District or WCCSD) owns and operates a public water system that serves domestic water to approximately 945 service connections, with a population of 1,710 people.

The source of supply for your water is from Willow Creek, a tributary of the Trinity River. Your source water is drawn through naturally filtered sand and gravels in the creek streambed. The District also collects surface water during summer demand from a surface water collection system with a special protective intake.

Our water treatment facility was installed in the spring of 2007. This facility is a modern, inline, direct filtration plant. This facility consists of a control center with the latest in technology with controls and monitoring equipment. The three, multi-stage, pressure filters have 720 square feet of surface filter media that produce the highest quality of water. To assist in the filtration process, a synthetic organic polymer is added to the water, prior to the filters, which causes the very small particles to clump together and filter out.

With the installation of our water treatment facility, the District meets the Surface Water Treatment Rule. All public systems under the direct influence of surface water shall have a filtration system that will remove *Cryptosporidium* 99% of the time, *Giardia lamblia* cysts 99.9% of the time and Viruses 99.99% of the time. The key item in this process is the addition of sodium hypochlorite (chlorine) to the water. We are required by the State to maintain a chlorine residual in the water distribution system at all times.

The facility can produce up to three million gallons of water a day at peak production if needed. Normal production in the summer averages 1.2 million gallons per day and in the winter the average is 325,000 gallons of water per day.

The District monitors disinfection and turbidity 24 hours per day. The treatment facility has alarms that will shut down the treatment facility in case of equipment and treatment failures. This alarm system is to protect our customers from potential pathogens that, if not treated properly, may cause humans to become ill.

Testing for bacteriological contaminants in the distribution system is required by State Regulations. Testing is done regularly to verify that the water system is free from coliform bacteria. The minimum number of tests required for our District is three per month. In our distribution system, we generally test once per week. We also take a sample once per month for source water bacteria. The District has met coliform standards within our distribution system.

**2022 Annual Water Usage (million gallons) - 217.4 million gallons total**

Jan.	Feb.	Mar.	Apr.	May	June	July	Aug.	Sep.	Oct.	Nov.	Dec.
11.9	10.3	11.1	12.7	15.1	22.4	29.5	35.3	24.7	20.3	11.5	12.6



Este informe contiene información muy importante sobre su agua para beber.  
Favor de comunicarse Willow Creek Community Services District  
a 135 Willow Road, Willow Creek, 530-629-2136 para asistirlo en español.

### Lead

If present, elevated levels of lead can cause serious health problems, especially for pregnant women and young children. Lead in drinking water is primarily from materials and components associated with service lines and home plumbing. The Willow Creek CSD is responsible for providing high quality drinking water, but cannot control the variety of materials used in plumbing components. When your water has been sitting for several hours, you can minimize the potential for lead exposure by flushing your tap for 30 seconds to 2 minutes before using water for drinking or cooking.

### Lead and Copper Testing Results

Lead and copper testing of water from individual taps in the distribution system is required by State regulations. Our water system is required to sample every 3 years. The table below summarizes the most recent sampling for lead and copper. The 2023 testing will be completed this summer.

Test	Year tested	Number of Samples	Samples Required	90 <sup>th</sup> PPB	Action Level
Lead	2020	10	10	2.5	15
Copper	2020	10	10	810	1300

### Chemical sample results showing detected contaminants

The following tables list all detected chemicals in our water during the most recent sampling. Please note that not all sampling is required annually so in some cases our results are more than a year old. These values are expressed in PPM or PPB unless otherwise stated.

#### Contaminants with Primary MCLs

Chemical Detected	Source of Sample	Year Tested	Level	MCL	Source of Chemical
Trihalomethanes (TTHM's)	Distribution	2022	23	80 PPB	Organic / Chlorine
Haloacetic Acids (HAA5)	Distribution	2022	28	60 PPB	Organic / Chlorine
Nickel	Well 3	2022	14.5	100 PPB	Natural Deposits
Radium 228	Wells 2 & 4	2013	0.424	2 pCi/L	Natural Deposits
Chromium hexavalent (Chromium 6)	Composite Well	2017	2.2	10 PPB	Natural Deposits / Chemical Plants

#### Contaminants with secondary MCLs

Chemical Detected	Source of Sample	Year Tested	Level	MCL	Source of Chemical
Aluminum	Composite	2012	53	1000 PPB	Natural Deposits
Arsenic	Wells 2 & 4	2012	2.5	7 MFL	Natural Deposits
Asbestos	Wells 2 & 4	2017	0.5	10 PPB	Natural Deposits
Chloride	Pump 3	2022	2.91	250 PPM	Natural Deposits
Foaming Agent (MBAS)	Composite	2018	0.05	0.5 PPM	Municipal and industrial waste discharges
Total Dissolved Solids (TDS)	Pump 3	2022	120	500 PPM	Natural Deposits
Specific Conductance	Composite	2018	160	1600 µS/cm	Substances that form ions when in water; seawater influence
Sulfate	Pump 3	2022	10.24	250 PPM	Natural Deposits
Iron	Wells 2 & 4	2012	0.035	0.3 PPM	Natural Deposits

### Drinking Water Source Assessment & Watershed Study

Our most recent water source assessment was completed by the State Water Resource Control Board, Division of Drinking Water, in August 2002.

Our most recent watershed study was completed by Trinity Valley Consulting Engineers, Inc. May 2014

If you would like to view the complete assessment of our drinking water source, our address is 135 Willow Road in Willow Creek, CA or you may call our office at 530-629-2136 and ask for Susan O’Gorman, General Manager.

### Definitions of some of the terms used in this report:

**Public Health Goal (PHG):** The level of contaminant in drinking water below which there is no known or expected risk to health. PHGs are set by the California Environmental Protection Agency.

**Maximum Contaminant Level Goal (MCLG):** The level of a contaminant in drinking water below which there is no known or expected risk to health. MCLGs are set by Federal Environmental Protection Agency (USEPA).

**Maximum Contaminant Level (MCL)** The highest level of a contaminant that is allowed in drinking water.

**Primary MCLs** are set as close to the PHGs (or MCLGs) as is technologically, and economically feasible.

**Secondary MCLs** are set to protect the odor, taste and appearance of drinking water.

**Primary Drinking Water Standards (PDWS):** MCLs for contaminants that affect health, along with their monitoring and reporting requirements, and surface water treatment requirements.

**Action Level (AL):** The concentration of a contaminant which, if exceeded, triggers treatment or other requirements which a water system must follow.

**MFL:** million fibers per liter

**PPB:** parts per billion or micrograms per liter

**PPM:** parts per million or milligrams per liter

**ND:** non detectable at testing limit

**TDS:** Total Dissolved Solids

**Sources of drinking water** (both tap and bottled water) include rivers, lakes, streams, ponds, reservoirs, springs and wells. As water travels over the surface of the land or through the ground, it dissolves naturally-occurring minerals and, in some cases, radioactive material, and can pick up substances resulting from the presence of animals or from human activity.

### Contaminants that may be present in source water include:

- Microbial contaminants, such as viruses and bacteria that may come from sewage treatment plants, septic systems, agricultural livestock operations and wildlife.
- Inorganic contaminants, such as salts and metals, that can be naturally-occurring or result from urban storm water runoff, industrial or domestic waste water discharges, oil and gas production, mining, or farming.
- Pesticides and herbicides, which may come from a variety of sources such as agriculture, urban storm water runoff and residential uses.
- Organic chemical contaminants, including synthetic and volatile organic chemicals that are byproducts of industrial processes and petroleum production, and can also come from gas stations, urban storm water runoff and septic systems.
- Radioactive contaminants, which can be naturally-occurring or be the result of oil and gas production and mining activities.

### General Information on Drinking Water

All drinking water, including bottled water, may reasonably be expected to contain at least small amounts of some contaminants. The presence of contaminants does not necessarily indicate that the water poses a health risk. More information about contaminants and potential health effects can be obtained by calling the USEPA's Safe Drinking Water Hotline at 1-800-426-4791.

Some people may be more vulnerable to contaminants in drinking water than the general population. Immune-compromised persons such as persons with cancer undergoing chemotherapy, persons who have undergone organ transplants, people with HIV/AIDS or other immune system disorders, some elderly individuals, and infants can be particularly at risk from infections. These people should seek advice about drinking water from their health care providers. The USEPA/Center for Disease Control guidelines on appropriate means to lessen the risk of infection by cryptosporidium and other microbiological contaminants are available from the Safe Drinking Water Hotline at 1-800-426-4791.

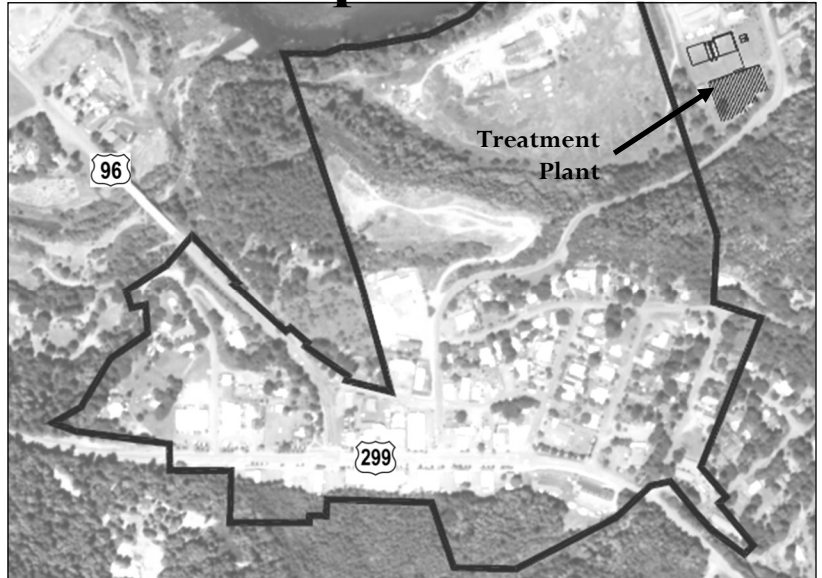


Your water utility is responsible for underground pipes from the street up to your water meter, but if your pipes leak after your water meter it is your responsibility to make repairs.

# Downtown Wastewater Update

## Construction has begun!

- The wastewater project is finally in construction. The project is 100% grant funded by the State Water Resources Control Board (SWRCB) and the USDA.
- The general contractor, Mercer Fraser Co., has already started locating utility crossings and will probably have begun trenching on the Terrace by the time this newsletter has been sent out!
- The wastewater service boundary of the system is shown in the image to the right. It is only in the downtown area and properties adjacent to the wastewater treatment plant.
- The collection system will be gravity sewer lines with two pump stations. The project will include working with land owners to remove their existing septic tanks and to install new sewer lines to the main street lines.
- The annual budget for the new wastewater system will be paid by collecting monthly sewer rates from the properties that are connected to the system. Those outside of the service boundary and not connected to the system will not receive a bill.



**Questions ?** If you have any questions regarding this project, please feel free to contact the General Manager, Susan O’Gorman.



## Sign Up for Emergency Notifications

### Humboldt ALERT

**Humboldt ALERT** is our County’s public alert and warning system. We strongly encourage all community members to sign up at:

[humboldt.gov.org/2014/Emergency-Notifications](http://humboldt.gov.org/2014/Emergency-Notifications)

## Evacuation Orders

**KNOW YOUR ZONE!**

Residents are encouraged to Know Your Zone before the next emergency occurs by visiting the new interactive map on Zonehaven AWARE at:

[community.zonehaven.com](http://community.zonehaven.com)



## Are you prepared for a power outage?

Our power frequently goes out in this area. If your cooking stove is electric, we suggest you have a back-up stove, such as a Coleman Camping stove that uses 16 oz propane cylinders, and have a cylinder on hand at all times.



We also suggest:

Flashlights, batteries, candles and matches. A couple gallons of stored water and dry food, such as pasta, rice and beans.

## Do you have medical device or assisted technology?

There are resources to help provide backup batteries for medical devices and assisted technology. Please contact Dawn Albrecht “Disaster Dawn” at 707-407-5653. She can help connect you to resources, so that you can be prepared for our next disaster.



## Emergency Plan

Our community is susceptible to emergencies. We encourage all community members to make their own emergency plan. Humboldt OES, The Red Cross, or [www.ready.gov](http://www.ready.gov) are all good resources.

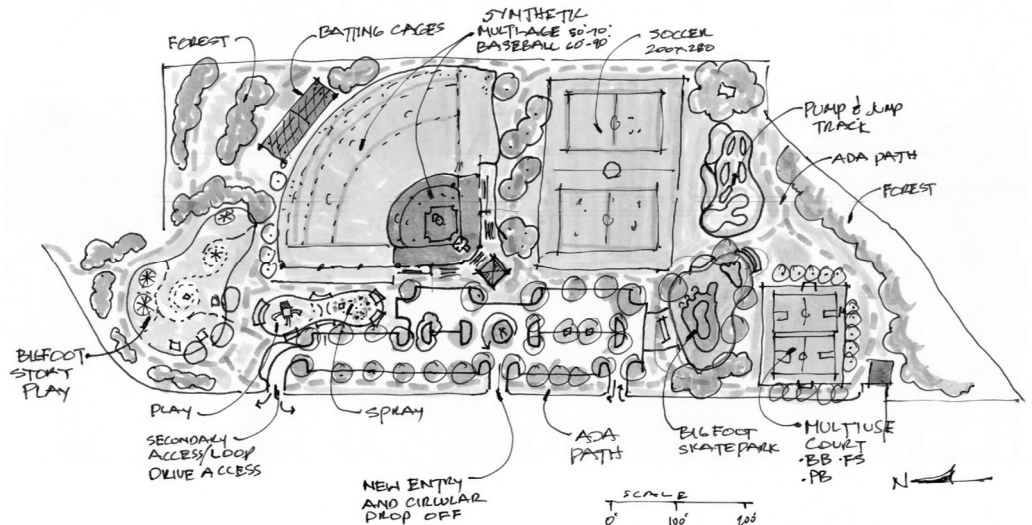
# Recreation Updates

## \$1.98 Million Rural Rec & Tourism Grant!

On our third grant application to the State of California Department of Parks and Recreation, the Willow Creek Community Services District has been awarded a \$1.98 million dollar grant for upgrades to Veteran's Park!

The following 9 items will be completed as part of the grant, among other general improvements:

1. NEW Bigfoot Bowl Skate Park
2. Renovate Tennis courts into NEW multi-use, multi -age Sport Courts
3. NEW Accessible walking path
4. NEW snack shack building
5. Renovate the existing Bike Park
6. NEW Bigfoot themed Water Feature
7. NEW 'Bigfoot Story' playground area
8. Renovate an existing baseball field to WCBC standards
9. Solar lighting throughout the Park



The District has recently completed a RFP (request for proposal) process and selected Melton Design Group (MDG) out of Chico to assist in the final design. They will be using Trinity Valley Consulting Engineers to survey the park and provide assistance during construction. The project will be put out to bid in the spring of 2024 with construction of some of the new facilities expected to start in the summer of 2024 with the remainder in 2025.

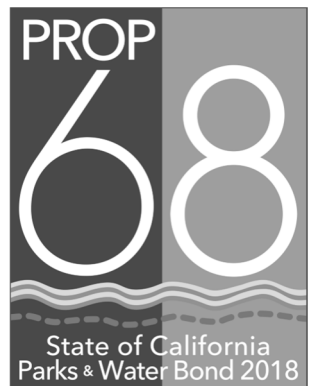
The sketch above was submitted with the MDG proposal. It is not the final design, but rather an idea of things we could do. MDG will have a booth at Bigfoot Daze to preview the new park design ideas. There will also be upcoming community input meetings, soon to be scheduled. We will post these meeting times at the District Office, the Post Office bulletin board, and through our email list. You are also welcome to call the office with any questions and to learn about upcoming input meetings.

## Creekside Park Disc Golf Expansion

The District has used funds from the State of California Parks Proposition 68 Per Capita funds to expand the disc golf course at Creekside Park.

The new Chinook Salmon Disc Golf course is a complete 18 hole course. The new tees and baskets have been set and we will soon have new signage. Please remember that there is no wading or swimming in the creek, as it is our communities drinking water.

Additional upgrades will also be happening this fall at Creekside Park. We will be installing a new pit toilet bathroom and a new play structure!



**Loose something in the park?** Sometimes lost items are turned into our office. Please check with us if you have lost something at the parks.  
530 629-2136



### Our Parks are Fee Based !

If you would like to have a barbeque, birthday party, baseball or softball game, or other event at one of our parks, please contact the WCCSD Office at  
530-629-2136.

Your spot will be reserved by your fee payment which goes towards trash bills, mowing, supplies, and repairs.