

Willow Creek C.S.D.

135 Willow Rd.
Willow Creek, Ca 95573-0008
Phone: 530-629-2136
Fax: 530-629-2137
willowcreekcsd@gmail.com



June 2021

**Bulk Rate
U.S. Postage Paid
Willow Creek Chamber
Permit No. 31**

Return service requested

District Staff

Susan O’Gorman, General Manager
Lynn White, Office Manager
Kevin Latham Jr., Senior Operator
Wyatt Opie McBroom, Operator II
Ken Gallamore, Recreation Technician
Steve Braun, Recreation Technician

WCCSD Board of Directors

Board Chair: Judy Gower
Vice Chair: Ed Duggan
Director: Joe O’Hara
Director: Riley Morrison
Director: Shannon Hughes



WCCSD Calendar

WCCSD Regular Board Meetings, 8 a.m.

at the District Office, 135 Willow Rd.
(4th Thursday each month, except Nov. and Dec.
where it is the 3rd Thursday)

July 22, Aug. 26, Sept. 23, Oct. 28, Nov. 18, Dec. 16

2022: Jan. 27, Feb. 24, Mar. 24, April 28,
May 26, and June 23

Holidays (Office will be closed)

July 5th

Labor Day - Sep. 6th

Veteran’s Day - Nov. 11th

Christmas Eve

New Years Eve

Martin Luther King Jr. - Jan. 17th, 2022

Lincoln’s Birthday - Feb. 11th, 2022

Washington's Birthday - Feb. 21st, 2022



~Leak Repair on Mayfair Street~



Willow Creek Community Services District
2020 Water Quality Consumer Confidence Report
Public Water System Number 12-10015
June 2021

For additional information concerning your drinking water, contact Susan O’Gorman, General Manager and Chief Operator, at 530-629-2136 or email willowcreekcsd@gmail.com. If you would like to tour of our facility, please contact Susan O’Gorman at 530-629-2136. Our operators would be more than happy to guide you through our treatment process.

The Willow Creek Community Services District (District or WCCSD) owns and operates a public water system that serves domestic water to approximately 945 service connections, with a population of 1,710 people.

The source of supply for your water is from Willow Creek, a tributary of the Trinity River. Your source water is drawn through naturally filtered sand and gravels in the creek streambed. The District also collects surface water during summer demand from a surface water collection system with a special protective intake.

Our water treatment facility was installed in the spring of 2007. This facility is a modern, inline, direct filtration plant. This facility consists of a control center with the latest in technology with controls and monitoring equipment. The three, multi-stage, pressure filters have 720 square feet of surface filter media that produce the highest quality of water. To assist in the filtration process, a synthetic organic polymer is added to the water, prior to the filters, which causes the very small particles to clump together and filter out.

With the installation of our water treatment facility, the District meets the Surface Water Treatment Rule. All public systems under the direct influence of surface water shall have a filtration system that will remove *Cryptosporidium* 99% of the time, *Giardia lamblia* cysts 99.9% of the time and Viruses 99.99% of the time. The key item in this process is the addition of sodium hypochlorite (chlorine) to the water. We are required by the State to maintain a chlorine residual in the water distribution system at all times.

The facility can produce up to three million gallons of water a day at peak production if needed. Normal production in the summer averages 1.2 million gallons per day and in the winter the average is 325,000 gallons of water per day.

The District monitors disinfection and turbidity 24 hours per day. The treatment facility has alarms that will shut down the treatment facility in case of equipment and treatment failures. This alarm system is to protect our customers from potential pathogens that, if not treated properly, may cause humans to become ill.

Testing for bacteriological contaminants in the distribution system is required by State Regulations. Testing is done regularly to verify that the water system is free from coliform bacteria. The minimum number of tests required for our District is three per month. In our distribution system, we test once per week. We also take a sample once per month for source water bacteria. The District has met coliform standards within our distribution system.

2020 Annual Water Usage (million gallons) - 238.6 million gallons total

Jan.	Feb.	Mar.	Apr.	May	June	July	Aug.	Sep.	Oct.	Nov.	Dec.
14.5	10.3	11.7	14.6	18.5	26.9	35.5	35.3	27.9	19.3	12.9	11.3



Este informe contiene información muy importante sobre su agua para beber.
Favor de comunicarse Willow Creek Community Services District
a 135 Willow Road, Willow Creek, 530-629-2136 para asistirlo en español.

Lead

If present, elevated levels of lead can cause serious health problems, especially for pregnant women and young children. Lead in drinking water is primarily from materials and components associated with service lines and home plumbing. The Willow Creek CSD is responsible for providing high quality drinking water, but cannot control the variety of materials used in plumbing components. When your water has been sitting for several hours, you can minimize the potential for lead exposure by flushing your tap for 30 seconds to 2 minutes before using water for drinking or cooking.

Lead and Copper Testing Results

Lead and copper testing of water from individual taps in the distribution system is required by State regulations. Our water system is required to sample every 3 years. The table below summarizes the most recent sampling for lead and copper.

Test	Year tested	Number of Samples	Samples Required	90 th PPB	Action Level
Lead	2020	10	10	2.5	15
Copper	2020	10	10	810	1300

Chemical sample results showing detected contaminants

The following tables list all detected chemicals in our water during the most recent sampling. Please note that not all sampling is required annually so in some cases our results are more than a year old. These values are expressed in PPM or PPB unless otherwise stated.

Contaminants with Primary MCLs

Chemical Detected	Source of Sample	Year Tested	Level	MCL	Source of Chemical
Trihalomethanes (TTHM's)	Distribution	2019	20	80 PPB	Organic / Chlorine
Haloacetic Acids (HAA5)	Distribution	2019	28	60 PPB	Organic / Chlorine
Nickel	Wells 2 & 4	2012	12	100 PPB	Natural Deposits
Radium 228	Wells 2 & 4	2013	0.424	2 pCi/L	Natural Deposits
Chromium hexavalent (Chromium 6)	Composite Well	2017	2.2	10 PPB	Natural Deposits / Chemical Plants

Contaminants with secondary MCLs

Chemical Detected	Source of Sample	Year Tested	Level	MCL	Source of Chemical
Aluminum	Composite	2012	53	1000 PPB	Natural Deposits
Arsenic	Wells 2 & 4	2012	2.5	7 MFL	Natural Deposits
Asbestos	Wells 2 & 4	2017	0.5	10 PPB	Natural Deposits
Chloride	Wells 2 & 4	2012	2.4	250 PPM	Natural Deposits
Foaming Agent (MBAS)	Composite	2018	0.05	0.5 PPM	Municipal and industrial waste
Total Dissolved Solids (TDS)	Wells 2 & 4	2018	130	500 PPM	Natural Deposits
Specific Conductance	Composite	2018	160	1600 µS/cm	Substances that form ions when in water; seawater influ-
Sulfate	Wells 2 & 4	2012	12	250 PPM	Natural Deposits
Iron	Wells 2 & 4	2012	0.035	0.3 PPM	Natural Deposits

Drinking Water Source Assessment & Watershed Study

Our most recent water source assessment was completed by the State Water Resource Control Board, Division of Drinking Water, in August 2002.

Our most recent watershed study was completed by Trinity Valley Consulting Engineers, Inc. May 2014

If you would like to view the complete assessment of our drinking water source, our address is 135 Willow Road in Willow Creek, CA or you may call our office at 530-629-2136 and ask for Susan O'Gorman, General Manager.

Definitions of some of the terms used in this report:

Public Health Goal (PHG): The level of contaminant in drinking water below which there is no known or expected risk to health. PHGs are set by the California Environmental Protection Agency.

Maximum Contaminant Level Goal (MCLG): The level of a contaminant in drinking water below which there is no known or expected risk to health. MCLGs are set by Federal Environmental Protection Agency (USEPA).

Maximum Contaminant Level (MCL) The highest level of a contaminant that is allowed in drinking water.

Primary MCLs are set as close to the PHGs (or MCLGs) as is technologically, and economically feasible.

Secondary MCLs are set to protect the odor, taste and appearance of drinking water.

Primary Drinking Water Standards (PDWS): MCLs for contaminants that affect health, along with their monitoring and reporting requirements, and surface water treatment requirements.

Action Level (AL): The concentration of a contaminant which, if exceeded, triggers treatment or other requirements which a water system must follow.

MFL: million fibers per liter

PPB: parts per billion or micrograms per liter

PPM: parts per million or milligrams per liter

ND: non detectable at testing limit

TDS: Total Dissolved Solids

Sources of drinking water (both tap and bottled water) include rivers, lakes, streams, ponds, reservoirs, springs and wells. As water travels over the surface of the land or through the ground, it dissolves naturally-occurring minerals and, in some cases, radioactive material, and can pick up substances resulting from the presence of animals or from human activity.

Contaminants that may be present in source water include:

- Microbial contaminants, such as viruses and bacteria that may come from sewage treatment plants, septic systems, agricultural livestock operations and wildlife.
- Inorganic contaminants, such as salts and metals, that can be naturally-occurring or result from urban storm water runoff, industrial or domestic waste water discharges, oil and gas production, mining, or farming.
- Pesticides and herbicides, which may come from a variety of sources such as agriculture, urban storm water runoff and residential uses.
- Organic chemical contaminants, including synthetic and volatile organic chemicals that are byproducts of industrial processes and petroleum production, and can also come from gas stations, urban storm water runoff and septic systems.
- Radioactive contaminants, which can be naturally-occurring or be the result of oil and gas production and mining activities.

General Information on Drinking Water

All drinking water, including bottled water, may reasonably be expected to contain at least small amounts of some contaminants. The presence of contaminants does not necessarily indicate that the water poses a health risk. More information about contaminants and potential health effects can be obtained by calling the USEPA's Safe Drinking Water Hotline at 1-800-426-4791.

Some people may be more vulnerable to contaminants in drinking water than the general population. Immune-compromised persons such as persons with cancer undergoing chemotherapy, persons who have undergone organ transplants, people with HIV/AIDS or other immune system disorders, some elderly individuals, and infants can be particularly at risk from infections. These people should seek advice about drinking water from their health care providers. The USEPA/Center for Disease Control guidelines on appropriate means to lessen the risk of infection by cryptosporidium and other microbiological contaminants are available from the Safe Drinking Water Hotline at 1-800-426-4791.

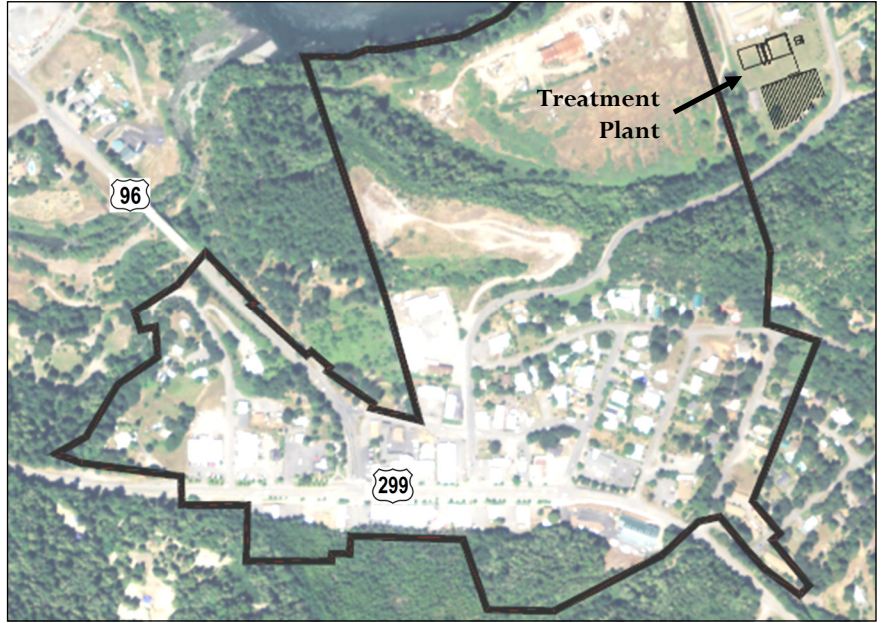


Your water utility is responsible for underground pipes from the street up to your water meter, but if your pipes leak after your water meter it is your responsibility to make repairs.

Downtown Wastewater Update

Slow, But Steady Progress!

- The wastewater project has had a few delays over this past year but we are getting very close to putting the project out to bid, and aim to be in construction by Spring 2022.
- The treatment plant property has been purchased. It will be at the site formerly owned by Marvyn & Phyllis Stockel at the corner of Country Club drive, across from Kimtu Road.
- The proposition 218 process of setting the new wastewater rates was completed in January 2020.
- The wastewater service boundary of the system has been selected. As shown in the image to the right, the wastewater system is only in the downtown area and properties adjacent to the wastewater treatment plant.
- The collection system will be gravity sewer lines with 2 pump stations. The project will include working with land owners to remove their existing septic tanks and install new sewer lines to the main street lines.
- After being treated, the water will be disposed into a large leach field. The water will not be dumped into the river. The leach fields will be very similar to a house hold leach field, just larger. The ground above the leach field will simply be a large lawn.
- The whole treatment process is very similar to what happens in a standard home septic system with the addition of the gravel beds to clean the water to state standards.
- To help with comparison, the treatment plant at Blue Lake is about 7 times larger than what the Willow Creek plant will be. The plant in McKinleyville is about 40 times larger!
- The annual budget for the new wastewater system will be paid by collecting monthly sewer rates from the properties that are connected to the system. Those outside of the service boundary and not connected to the system will not received a bill.



Questions ?

If you have any questions regarding this project, please feel free to contact the General Manager, Susan O’Gorman.

~ **New Water Billing Program** ~

This January 2021, we have started using a new water billing program, UBMax by Softline Data. This new program has new features that we have found very useful, and we hope you do too!

We can now email you your water bill, and stop the paper bills. Please call or email the office if you would like to have your water bill emailed. mail@willowcreekcsd.com

Ability to pay online. Go to our website: www.willowcreekcsd.com and click the pay online button at the top right of the home screen. Our municipality code is WillowCreekCA573

When you pay online, there is a service fee of \$3.00 fee for each \$100 owed. If you would like to avoid this fee you are welcome to set up automatic payment withdrawal from your checking account. Call the office to set this up. We complete the ACH transaction around the 15th of each month. Copies of your past bills can be found on the online system as well as a chart of your usage history.

We also wanted to make sure our customers are aware of our Discontinuation of Water Service Policy (Shutoff Policy). Your bill is considered delinquent if we have not received it by the 15th of the following month (2 months late) and a shutoff notice will be hung on the door or gate of the property, residence, or business. A collection fee of \$50 will be added to the total balance due. If you receive a shut off notice and do not pay and do not contact the District, your water service will be locked off. To have your water service re-connected, the bill will be due in full. This will include the \$50 collection fee mentioned above, as well as a \$50 connection fee (\$100 total).



Recreation Updates

Recreation Committee

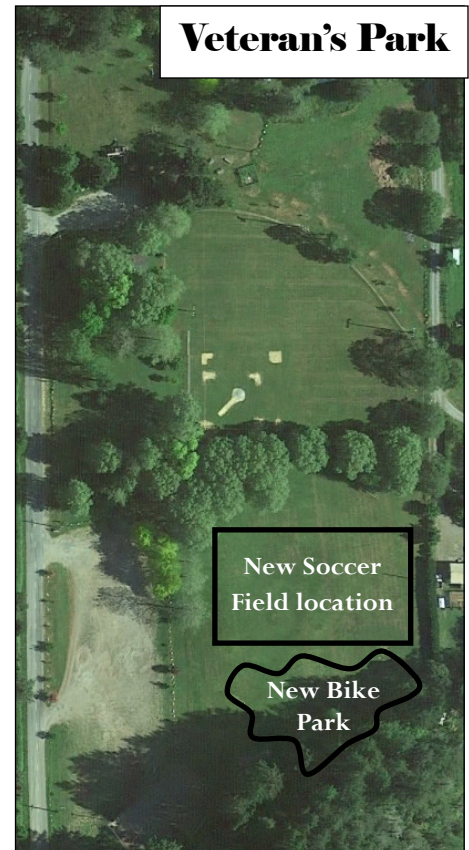
The WCCSD has recently started to have recreation committee meetings each month. Everyone in the community is invited. They are held the first Wednesday of the month, at 5 pm. In the spring they were done by Zoom and recently we have been having them on the soccer field at Veteran's Park. In the fall, it is expected that they will start to be at the District office. The agenda for the committee is posted on our website and at the bulletin board at the Post Office, the Friday prior.

Bike Park!!!

We are very excited to announce the beginning stages of a new bike park at Veteran's Park. The bike park will be located on the southern end of the existing soccer field, near the tennis court. The soccer field will be made slightly smaller and rotated to be perpendicular with Kimtu road.

The bike park will have a pump track area as well as practice mountain bike trails on the southern hillside. The plan is to have two areas, one for young beginning riders, and another for more advanced riders. The pump track will be constructed out of earth in the first year or so, with the goal to have it paved with asphalt in the future.

If you would like to volunteer to help complete the bike park, please contact the District office and will connect you with the volunteer group.



Prop 68 Grant Updates

Unfortunately, we did not receive a grant under the Round 3 application process, but we aren't giving up! We have applied again under the round 4 and are anxiously awaiting to hear if we are awarded.

We have however received some funding from the State, under the Proposition 68 Per Capita Grant funds. This was awarded to us simply based on population and the fact the WCCSD has a Recreation Department. We have been awarded \$173,000 and will be spending the money towards upgrades at Creekside Park and Veteran's Park.

Lastly, we are also planning to apply to the Proposition 68 Rural Recreation & Tourism Grant program. This program seems to be a very good fit to the Willow Creek area and we are optimistic that we could be awarded a sizable grant. We will be discussing the grant application during the recreation committee meetings and during the WCCSD Board meetings in the coming months. Please keep your eye out, as we will need community input on the grant application.

Creekside Park Expansion

The District is excited to announce that we have recently purchased a new piece of property. The property is adjacent to Creekside Park, upstream of the current park. It is a 19.5 acre undeveloped parcel. The District purchased the property for a multiple reasons. The property runs approximately a half mile along waterway of Willow Creek. This is the drinking water for our community and by purchasing the property the District can ensure the protection of the water supply. By purchasing the property the District will also be able to maintain the property in a fire safe manner, which is important as it is in a location that could pose significant fire risk to downtown. Lastly, the property will expand the size of Creekside Park. The recreation committee has been discussing the expansion of the frisbee golf at Creekside Park onto this new property.

Lose something in the park? Sometimes lost items are turned into our office. Please check with us if you have lost something at the



Our Parks are Fee Based !

If you would like to have a barbeque, birthday party, baseball or softball game, or other event at one of our parks, please contact the WCCSD Office at 530-629-2136.

Your spot will be reserved with your fee. Fees go towards trash bills, mowing, watering,